



**JIANGSU PHOENIX ART MATERIALS TECHNOLOGY CO.,LTD.**

**Add:** No.2 Huayuan Road, Binhu Dist, Wuxi, Jiangsu, 214131 China

**PHOENIX ARTIST MATERIALS (CAMBODIA) CO., LTD.**

**Add:** Manhattan Special Economic Zone, Bavet City, Svay Rieng Province,  
Kingdom of Cambodia

[export@phoenix-arts.com](mailto:export@phoenix-arts.com)

[phoenixartmaterials.com](http://phoenixartmaterials.com)

**PHOENIX WALL ART**

**PHOENIX WALL ART**

**/ 2025 /**

**NO.01**



**PHOENIX  
WALL  
ART**







**JIANGSU PHOENIX ART MATERIALS  
TECHNOLOGY CO.,LTD.**

phoenixartmaterials.com

WALL ART



Success comes from  
our joint & unremitting efforts.

# PHOENIX INTRODUCTION

## + Since 1995

Jiangsu Phoenix Art Materials technology Co., Ltd. specializes in the manufacturing and exporting of high quality stretched canvas, wall art with the most advanced equipment and technology in China & Cambodia for more than thirty years to more than 50 countries, mainly in USA, Europe, Australia and Asia. Phoenix has over 3000 staffs and been approved SGS ISO 9001:2000 Quality System Certification. High quality has always been our pursuit. The color density, water resistance, light fastness and anti-aging properties, and both coating adhesion and cohesion of our wall art have exceeded the other competitive products.

High quality, competitive pricing and perfect after-sale service are our consistent aims. We are sure of success through our joint, and unremitting efforts, customer satisfaction being our greatest achievement.



### Copyright Advantages

---

With rich exclusive copyright advantages, we can provide wall art of different styles.

### Ink Jet Printing Canvas Advantages

---

Independent research and development and production of ink jet printing canvas.

### Factory Advantages

---

Owning a self-operated factory in Cambodia, reducing tariffs.

### Stretched Canvas Advantages

---

30 years of stretched canvas production experience, customizable sizes, rich special-shaped stretched canvas categories, meeting the market demand for wall art.

# MAJOR ADVANTAGES





PHOENIX wall art offers a diverse selection, featuring authorized original patterns from renowned artists as well as popular online elements. Boasting vibrant colors and beautiful compositions, PHOENIX artworks can satisfy personalized preferences while infusing living spaces with unique artistic ambiance. Whether you like avant-garde art or classical elegance, you can find your favorite wall art here. PHOENIX uses exquisite craftsmanship to present high-quality artistic quality to customers and inject new vitality into home art decoration. Make your living space more charming because of PHOENIX.







# INTRODUCTION OF WALL ART

## Varied Materials:

### ▪ MDF Frame

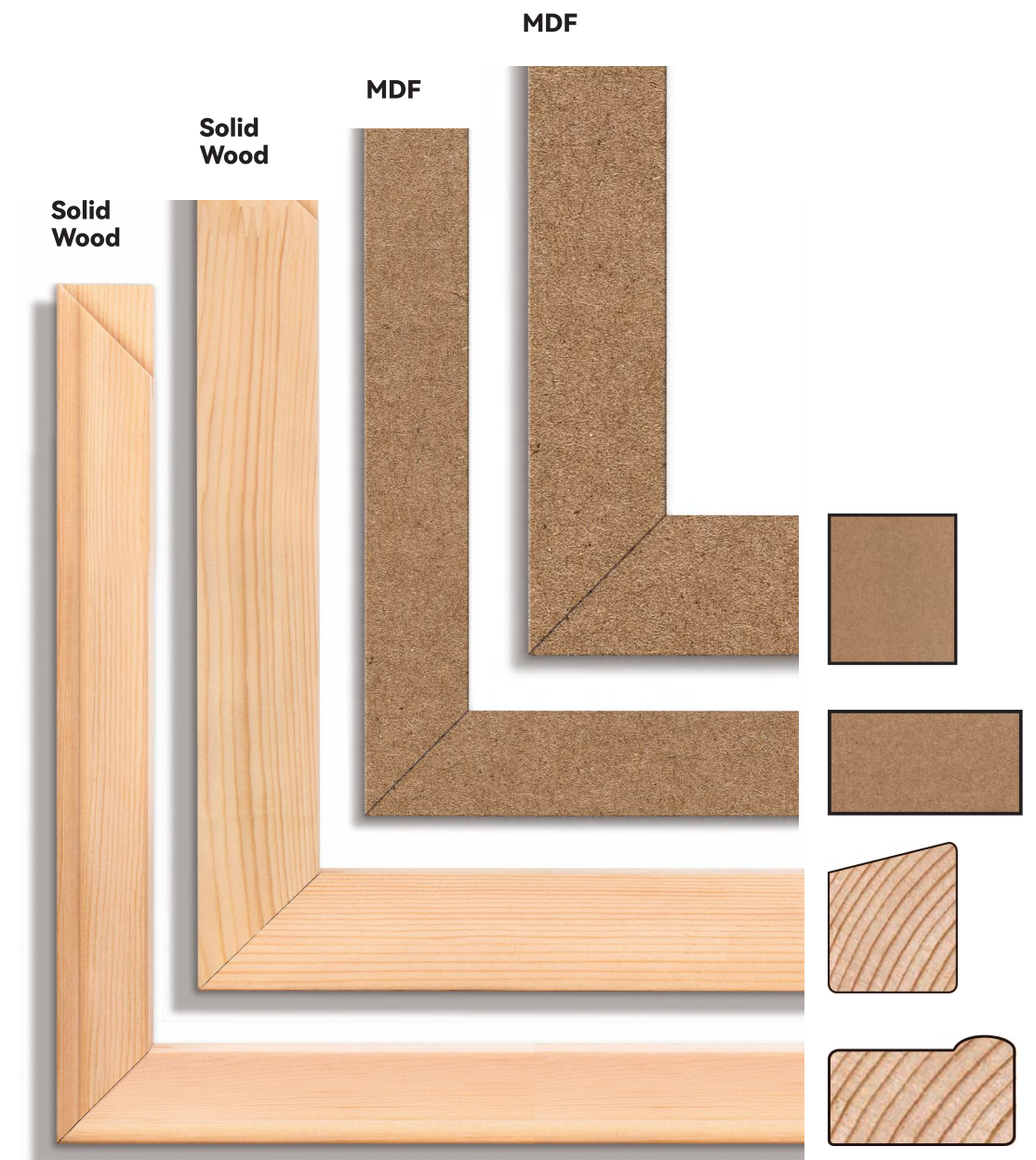
-  Uniform Internal Structure
-  Large Format & Adjustable Thickness
-  Convenient Surface Treatment
-  Excellent Environmental Performance

### ▪ Solid Wood Frame

-  Natural & Beautiful
-  Light & Tough
-  High Stability
-  Good Durability



## Stretcher Bar:

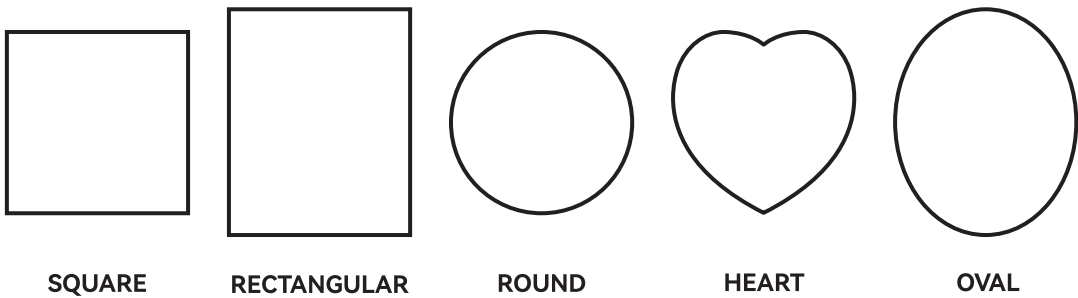




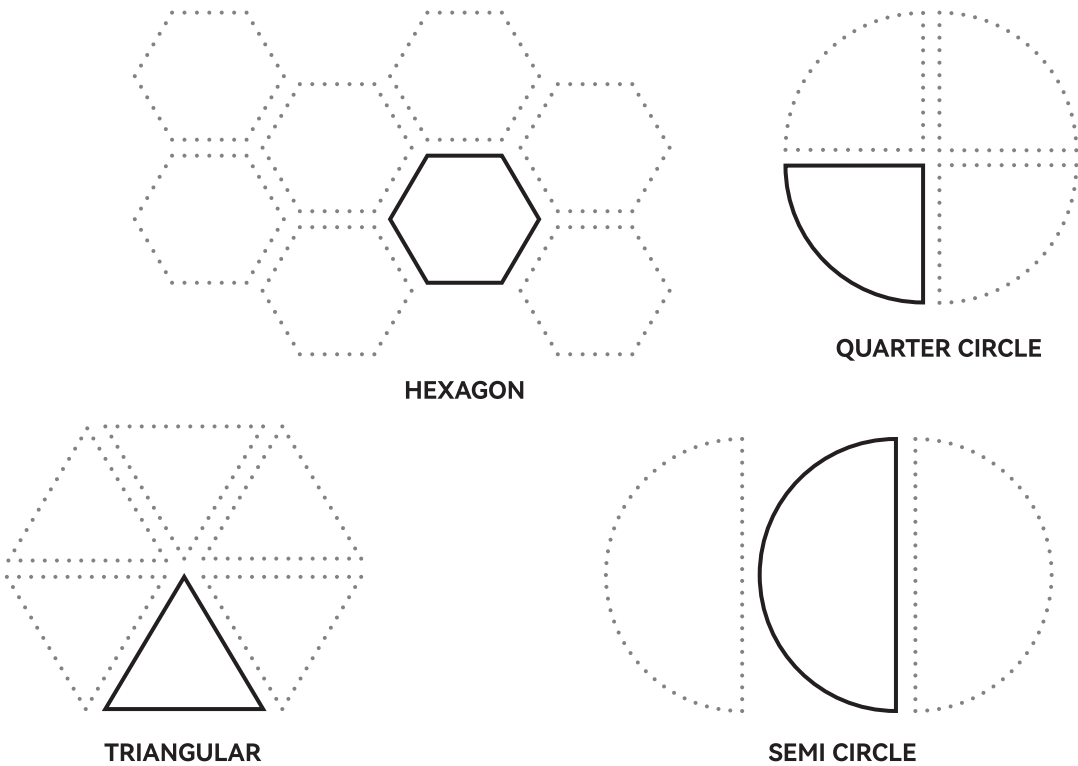
# Diverse Shapes:

Regular picture frame and special-shaped picture frame.

## → Recommended Shapes for Single-Piece



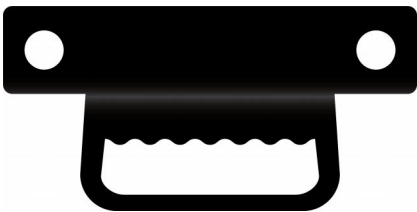
## → Recommended Shapes for Multi-Piece Sets



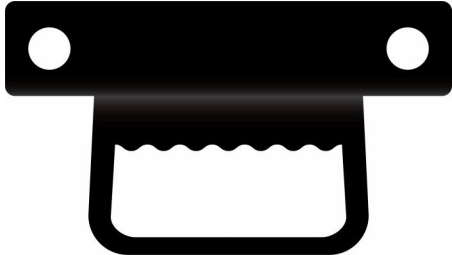
# Varied Accessory Selections:

Consumers can flexibly choose the most suitable accessories according to the material and decoration requirements of the wall, which is convenient for installation and display, and improves the overall user experience.

### ■ L-Shape Serrated Hanging (Standard Size)



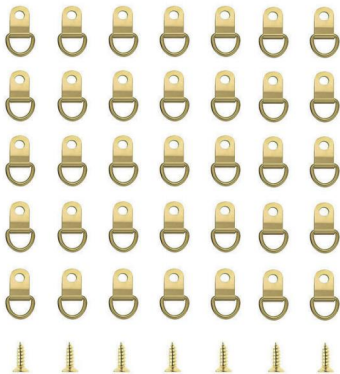
### ■ L-Shape Serrated Hanging (Large Size)



### ■ Frame Stand (Material: Iron)



### ■ D-type Hanging







# PHOENIX WALL ART

# CATALOGUE

<b>Modern Art Series</b>	<b>10</b>
<b>Abstract Geometry Series</b>	<b>52</b>
<b>Landscape Series</b>	<b>112</b>
<b>Animal Series</b>	<b>170</b>
<b>Floral Series</b>	<b>190</b>
<b>Portrait Series</b>	<b>222</b>





ARTIST  
AUTHORIZATION



# MODERN ART SERIES

The Modern Art Series boldly experiments and breaks conventions, presenting the pioneering voices of avant-garde artists, inspiring the viewer to reconsider their perspectives and unlock new modes of contemplation.



## TANG YONGKUN

Focusing on discussing the identity positioning of women and their status in society.

Doll's House Series are inspired by the plot of Henrik Ibsen's play 'A Doll's House'.

Throughout the long era of male-dominated moral and ethical norms, women in life were seen as the 'other', treated as 'objects', without autonomous consciousness and subjectivity.

Series of  
Art Piece

Doll's House  
Series





SERIES OF ART PIECE:  
DOLL'S HOUSE SERIES



**1026003**  
Doll's House No.14  
100×140cm

My works mainly focus on female identity and their situation in society.  
In the long period of moral and ethical norms dominated by male power,  
women are the "other" of life; they are "things"; they are accessories that cannot have subjectivity.



**1026002**  
Doll's House No.12  
70×100cm

**1026001**  
Doll's House No.9  
150×160cm







## LI GAOYANG

After leaving hometown,  
people often wakes up in the middle of the night for no particular reason,  
filled with nostalgia for certain tastes and interests from the past.

But after daybreak,  
everything returns to normal,  
and immerses oneself in the human tide as usual.  
The emotion of homesickness feels like an illusion,  
surging only in the quiet of the night.

So, beginning to search for things that are not easily changed,  
which stand like a beacon,  
indicating the direction of the homeward path.

It was this very intention that led to the creation of the "Objects Series".

### Series of Art Piece

Objects



By tracing back to the fragmented remains  
of ancient history and culture,  
I hope to build my own understanding of Chinese aesthetics on this basis.



1012001

Objects  
23x30cm





## DAI YIXUAN



Through the processing of light and shade and color, and the use of classical shading painting techniques in some places, the bright and fluorescent electronic effect of digital light sources is simulated, so that the light is scattered from the picture itself.

The overall bright and eye-catching color performance of the picture shows the Internet world full of information confusion and mixed opinions.

### Series of Art Piece

Party Series

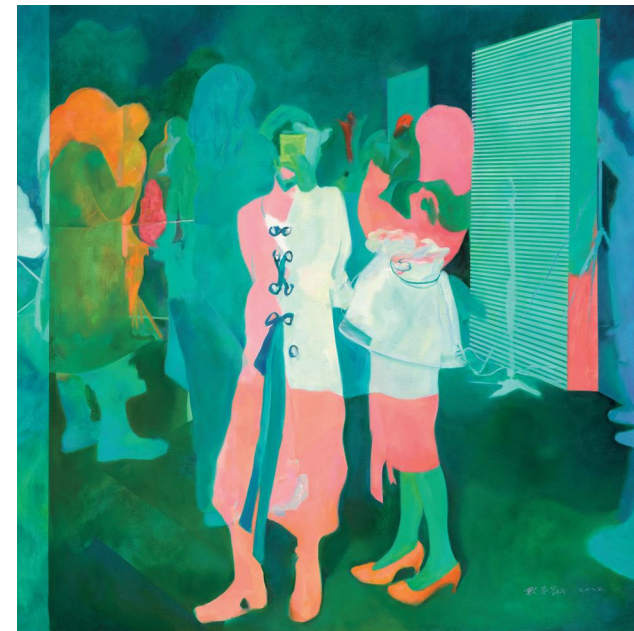
Seven Seconds Series



### SERIES OF ART PIECE: PARTY SERIES

There is a mysterious distance between people.

This interpersonal relationship that tends to be screen-based and virtualized, in the context of the Internet, dilutes and confuses the meaning of gathering and separation.



**1001001**  
Party Series 6  
150×150cm

**1001002**  
Party Series 5  
150×150cm





SERIES OF ART PIECE:  
SEVEN SECONDS SERIES

I heard that fish have a very short memory.  
Seven seconds may be the fate and love of a lifetime.



**1001004**  
Seven Seconds  
60×30cm

**1001003**

MIAO QIAN



Many of the urban city paintings,  
encompass both realistic depictions  
and surreal compositions  
that blend reality and fantasy.

With a unique, simple, elegant,  
and romantic style,  
they express emotions  
such as inner inspiration, hope,  
and anticipation.

Series of Art Piece

- Street Fantasy
- Street Expectation
- Street Magic
- Meet the Beatles
- A battle



ARTIST  
AUTHORIZATION

ARTIST  
AUTHORIZATION

Perhaps the sperm whales and submarines in the deep sea  
on the big display screen  
have a dream of exploring the surface,  
so they come to see another space with the help of the magician.

Looking up at the starry sky, there may be fish, birds, and old friends who have long gone,  
meeting us at that moment.



**1022001**  
Street Fantasy  
100x80cm



**1022003**  
Street  
Expectation  
70x90cm



ARTIST  
AUTHORIZATION

Maybe there was a dolphin trapped in a manhole by evil,  
and one day it gained energy,  
flew out of the manhole and returned to ts home in the sea.



**1022002**  
Street Magic  
90x70cm



**1022004**  
Meet the Beatles  
80x70cm

As the Beatles sang,  
I seemed to see them walking through the streets I was familiar with.

ARTIST  
AUTHORIZATION





**1022005**

A battle  
70x90cm

Wars and other cruel things happen every day in this world, and most people just ignore them and live their lives. This work is a metaphor for this phenomenon.

Drawing so many shoes and hiding the portraits, leaving only a child walking alone, is an attempt to express the inner pain and helplessness.

## SU JIANGNAN



The natural and abstract elements are seamlessly integrated, and through the use of rich colors and delicate brushwork, the paintings exude a vibrant and hopeful atmosphere.

The collision of colors and shapes expresses the artist's inner emotions and contemplations, and each work contains a unique understanding of life and hope.

Art is the evocation of the soul, conveying an uplifting and positive force.

No matter the circumstances, people should maintain a steadfast longing and pursuit for a better life.

### Series of Art Piece

The Winding Path  
in the Dawn

The Dawn  
of the Dark Realm

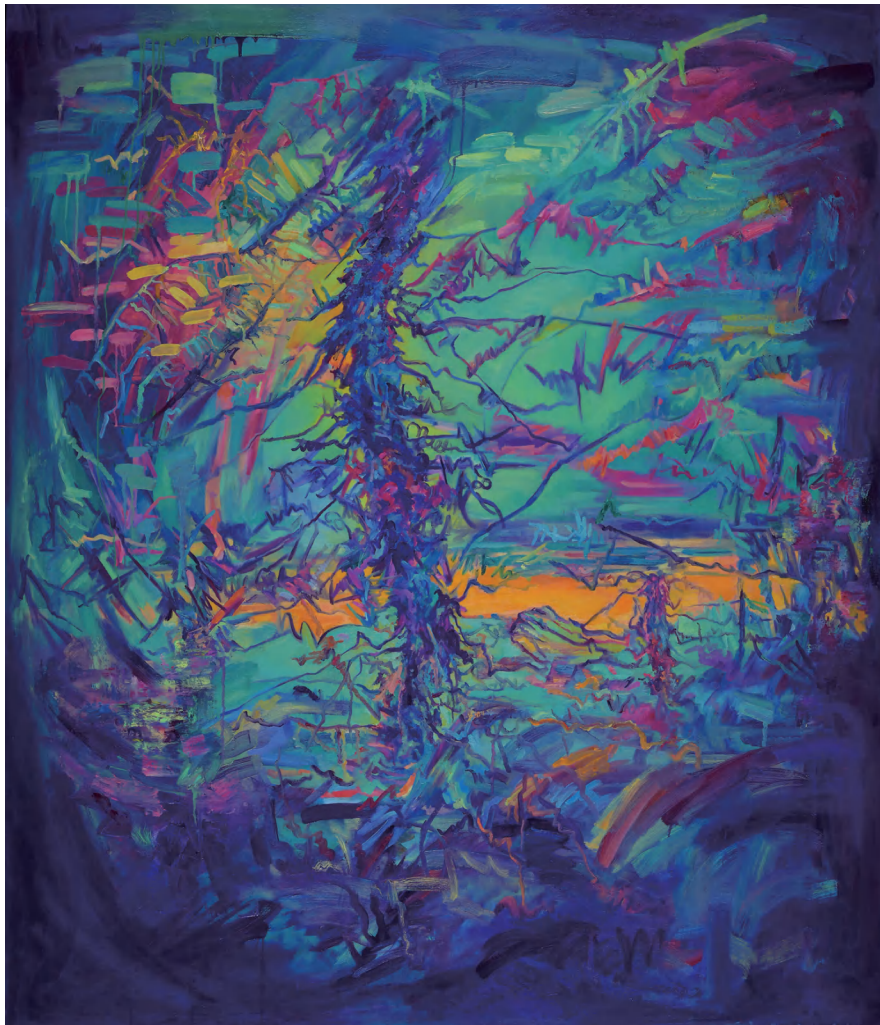
Dawn of Life

The Tranquility  
of the Dawn





Through rich colors and dynamic brushstrokes,  
it shows the tenacity and indomitable spirit of life.



**1024003**  
The Winding Path in the Dawn  
180x215cm



In this universe, a striking red round object is like a bright star, shining brightly.  
It symbolizes the hope and vitality of life,  
like a beam of light in the dark, illuminating the way forward.



**1024004**  
The Dawn of the Dark Realm  
180x215cm





A gorgeous and colorful plant growth, full of vitality and vigor.



**1024001**  
Dawn of Life  
120x70cm

Through the depiction of natural landscapes, elements such as grass, flowers, water and sky are intertwined to create a picture full of vitality and vigor.



**1024002**  
The Tranquility  
of the Dawn  
120x70cm



# LIN ZIFU

Read more books,  
debate more with others and yourself,  
be patient,  
avoid being indecisive and half-hearted,  
"a lifetime of hanging".

Series of Art Piece

My Memories of  
Bianjing



ARTIST  
AUTHORIZATION

ARTIST  
AUTHORIZATION

The greatest human instinct is to 'keep working together to survive',  
and to leave behind an irreplaceable memoir within our limited lifetimes.

This is the essence of my creative concept.



**1016001**  
My Memories of Bianjing  
60x45cm

# SU XIAOMIN



Focusing on the in-depth exploration  
of the composition of the picture  
and the language of painting,  
and preferring those deep  
and philosophical themes,  
artists should continue to  
maintain an inward observation and thinking.

This introspection is not only the source of  
artistic creation,  
but also an important quality for artists to think  
and create independently.

Series of Art Piece

Floating Series





### SERIES OF ART PIECE: FLOATING SERIES

The Floating Series is another attempt of mine to deconstruct and reconstruct the images.

I hope to present a kind of loneliness and tranquility through the complex image relationships, and also want to express the alienation of the self in the complex social relationships of contemporary people.



**1041001**  
Floating 1  
80x100cm

**1041002**  
Floating 3  
80x100cm



## ZHANG DUOBAO



Continue to pay attention to natural objects, various animals, and various stones. They all have different forms and different personalities. Describe the details of different objects to feel and understand the living space and status of different people.

Use more continuous and trivial brushstrokes to create more changes and details, so as to inject an inner spiritual power into the work.

### Series of Art Piece

Layout Series

Gathering Stones  
into a Mountain  
Series

Wave





**1033001**  
Layout NO.2  
50×70cm

### SERIES OF ART PIECE: LAYOUT SERIES

This series is intended to express its state of existence, while also reflecting the living conditions of people in today's society.



**1033002**  
Layout NO.3  
40×75cm



### SERIES OF ART PIECE: GATHERING STONES INTO A MOUNTAIN SERIES

Stone is a product of nature.  
To me, the shapes of stones are interesting and have more meanings.



**1033003** Gathering Stones into a Mountain NO.1 70cm×130cm



**1033004** Gathering Stones to Form a Mountain NO.2 70cm×130cm





They are both small and great,  
ranging from as small as a grain of sand to as large as a mountain,  
with many variations.



**1033005**

Wave  
100×70cm



## ZHANG TONG

The personal artistic language presents a diversity of elements  
while maintaining a consistent thread.

With a "concise" appearance,  
it simultaneously pursues surface-level tranquility  
while directly pointing to an inner energy.

Amidst the calm,  
it provides a sense of "unexpected" delight.

**Series of Art Piece**

Shadow Series



SERIES OF ART PIECE:  
SHADOW SERIES

All Phantoms.

**1034002**

Shadow-Making Clouds  
140\*100cm



**1034001**

Shadow-Red-billed Crow  
140\*100cm



ARTIST  
AUTHORIZATION

SERIES OF ART PIECE:  
SHADOW SERIES

All Phantoms.



**1034003**

Shadow  
100\*100cm





## LI YINQI



Reflectings the diverse creative directions  
and academic pursuits of contemporary young artists.

It embodies a strong spirit of exploration,  
active theoretical contemplation,  
abundant creative passion,  
and bold practical experimentation.

### Series of Art Piece

Mountains and  
Seas - Buzhou



The mountain is presented in a surreal posture. It is not static.

The outline of the mountain is sometimes clear and sometimes blurred,  
as if wandering between dreams and reality.



**1044001**  
Mountains and  
Seas - Buzhou  
54×73cm



ARTIST  
AUTHORIZATION



MENG TAO

In the floating world,  
the most beautiful nature,  
the beauty of all living things is incomparable,  
mountains, rivers, plants, insects  
and fish, fresh and quiet.

Here,  
away from all the disturbances,  
there is only primitive freedom.

Freedom is good,  
you can be unrestrained in it,  
draw what you like,  
and express what you want to express.

Series of Art Piece

Quiet

Search

Fan

Lost

Tibetan

ARTIST  
AUTHORIZATION

Among the three large katydids in the lush grass,  
at least one of them must be singing out loud and playing a moving melody.  
Is this melody better than that played by the trumpet?

Let us listen to the sound of silence in nature.



1039001

Quiet  
120x100cm





ARTIST  
AUTHORIZATION



The horse's head is looking around with confused eyes, searching for something in this reed-like towering grass.

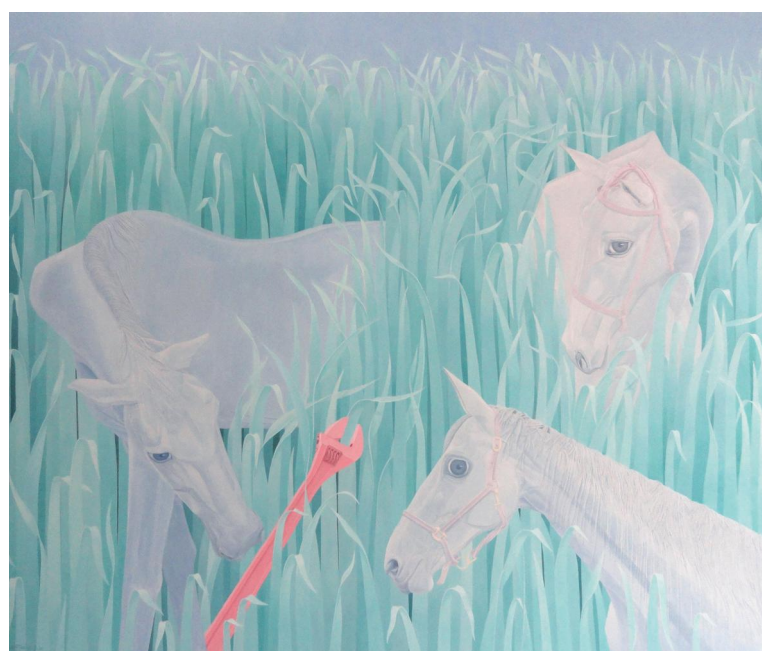
**1039002**

Search  
120x100cm

The combination of horse and plants, the horse is looming under the cover of lush plants, and the appearance of the wrench is not known whether it is due to loss or fascination.

**1039003**

Fan  
120x100cm



ARTIST  
AUTHORIZATION

The objects in the picture are realistic.  
The main object is a horse, which is matched with three different symbolic objects: a door, a wrench, and a sofa.

The objects in the picture also face choices and are lost in this maze.



**1039004**

Lost  
120x100cm





Faced with such a bleak reality,  
perhaps we are getting further and further away from our dreams.  
It would be better to return to nature and hide in the countryside  
to enjoy the comfort and pleasure.



**1039005**  
Tibetan  
120x100cm

# ART TRENDS

Explore new trends to find your style and discover the art of you.



**1000029**  
18X22cm





**1000030**  
33X33cm



**1000031**  
16X22cm



# ABSTRACT GEOMETRY SERIES

The Abstract Geometry Series presents an interweaving of shapes, lines, and colors on the canvas, choreographing a symphony of visual dynamism that guides the viewer to explore the fundamental elements that shape our world.



## YANG QINGXUE

Painting is a form of recording and expression.

It records the notes played today,  
the exhilarating ball game,  
the sunset on the way home from work...

It expresses the inner feelings  
and the ordinary moments of daily life.

### Series of Art Piece

When the Fog Disperses

River

Mountains and Seas





"When the Fog Dissipates" is a piece of music I created.  
It is a carnival rhythm before the fog dissipates and the dawn comes.



**1030003**  
When the Fog  
Disperses  
50x70cm



**1030001**  
River  
50x50cm

"River" is rock song.  
The rhythm of the drums is in the painting, and the paint flows in the music.  
You can still feel the rhythm.







Mountains and Seas is rock song.  
The rhythm of the drums is in the painting, and the paint flows in the music.  
You can still feel the rhythm.



**1030002**

Mountains and Seas  
50x50cm



## LI YIFANG

Within the traditional painting language,  
the artist combines other materials  
and mediums to create visual diversity.

The works revolve around the themes  
of "the present time",  
including re-interpreting historical classics  
from a modern perspective,  
and expressing the connection  
between one's inner spiritual activities  
and the current era.

### Series of Art Piece

Chaos and Order







ARTIST  
AUTHORIZATION

In creation, in life, or in any other experience,  
we always try to establish order in our own way from the initial chaos.

After the order unlocks a new dimension for us,  
new chaos appears again,  
and then we summarize, break, and reorganize...



**1015001**

Chaos and Order  
60x50cm



ARTIST  
AUTHORIZATION



**LIU PENG**

With an abstract painting style,  
the works express both the objective world  
and the inner world.

Through the intertwined yet repellent interplay of  
color blocks, lines, and geometric shapes,  
a unique space is created that is different from the real world.

The artist aims to use basic elements to eliminate  
the distractions of appearances,  
and to construct a reality that is truer to their own vision.

**Series of Art Piece**

Perfect World  
Series





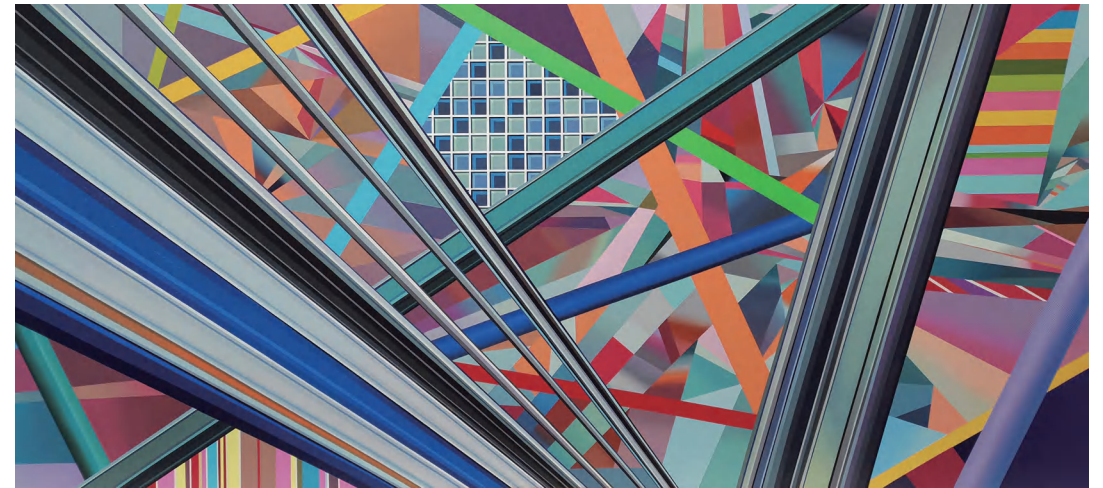
ARTIST  
AUTHORIZATION

SERIES OF ART PIECE:  
PERFECT WORLD SERIES

The world is big, so big that it is difficult for a person to see its full picture in a lifetime.  
The world is also small, so small that a person is a world.  
A person's world is the intersection of what you see, hear, feel and your heart.



**1008001**  
Perfect World 1  
150×150cm



**1008004**  
Perfect World 5  
45×100cm



**1008005**  
Perfect World 6  
45×100cm



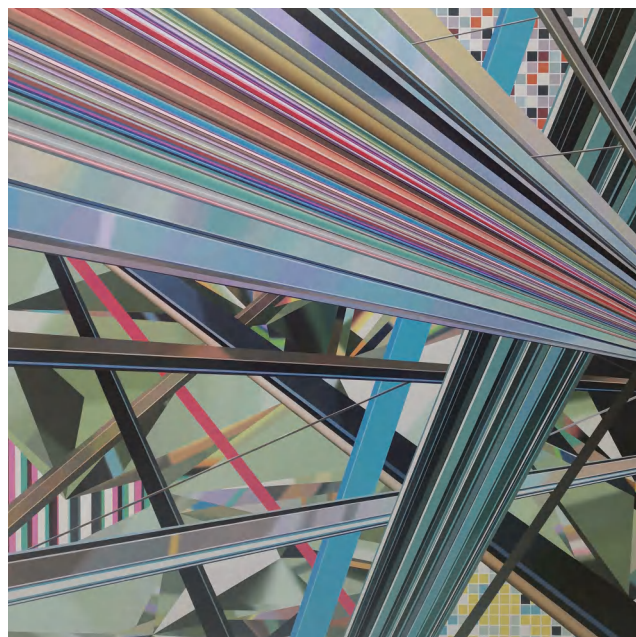


### SERIES OF ART PIECE: PERFECT WORLD SERIES

The world is big,  
so big that it is difficult for a person  
to see its full picture in a lifetime.

The world is also small,  
so small that a person is a world.

A person's world is the intersection  
of what you see, hear,  
feel and your heart.



#### 1008002

Perfect World 4  
150×150cm

#### 1008003

Perfect World 7  
150×150cm



## YIN TIELIN

Without being influenced  
by the current intertextuality  
or any popular styles,  
the main subjects are fish, birds,  
landscapes, flowers, and portrait masks.

It is not a single,  
coherent conceptualization and expression,  
but rather a continuous journey of  
seeking out subjects to engage in dialogue with.

The act of dialogue itself  
becomes captivating and meaningful.

#### Series of Art Piece

Fish





His fish is just a concept of fish, not realistic,  
but the fish in his heart.  
Whether it looks like or not is not the goal and ultimate value of painting.

On the contrary, it should be the painter's fixed and unique lines and images.  
Casual, free, detached, absolutely clean,  
not affected by anything, and very unique in form.



**1031001**

Fish  
80x60cm



## YU DE



Using vertical and horizontal lines as the medium,  
this abstract expression reflects  
a particular view of space and time.

The unrestrained interweaving of the lines  
becomes a symbolic language,  
representing social norms  
and conventions.

At the same time,  
it also signifies the individual's struggle,  
which appears meaningless  
or even futile in the face of  
these societal constraints.

### Series of Art Piece

Door of Hope

Destroyed Sensory  
Certainty





The use of red lines in the work injects a strong visual impact and emotional depth into the artwork. This color choice is often not just to attract the eye, but also a means for the artist to convey a specific emotion, atmosphere or concept, a symbol of order.



**1032001**  
Door of Hope  
60X90cm



In the process of mutual transformation between sensibility and rationality, a fusion and collision of colors is inadvertently formed. This collision is sometimes gentle and agile, and sometimes passionate in emotional expression.



**1032004**  
Destroyed Sensory  
Certainty  
150X100cm





## CHEN GELIN

By overlapping and interweaving linear fiber materials  
in the layered space,  
the lines and colors show a network state,  
which is used to express the trajectory of light  
and the sense of time  
and space brought by speed.

### Series of Art Piece

Song

Mystery Series



### SERIES OF ART PIECE: MYSTERY SERIES

There are rules in the fog,  
and breakthroughs in the confusion.

#### 1005001

Myste  
80×100cmry

#### 1005002

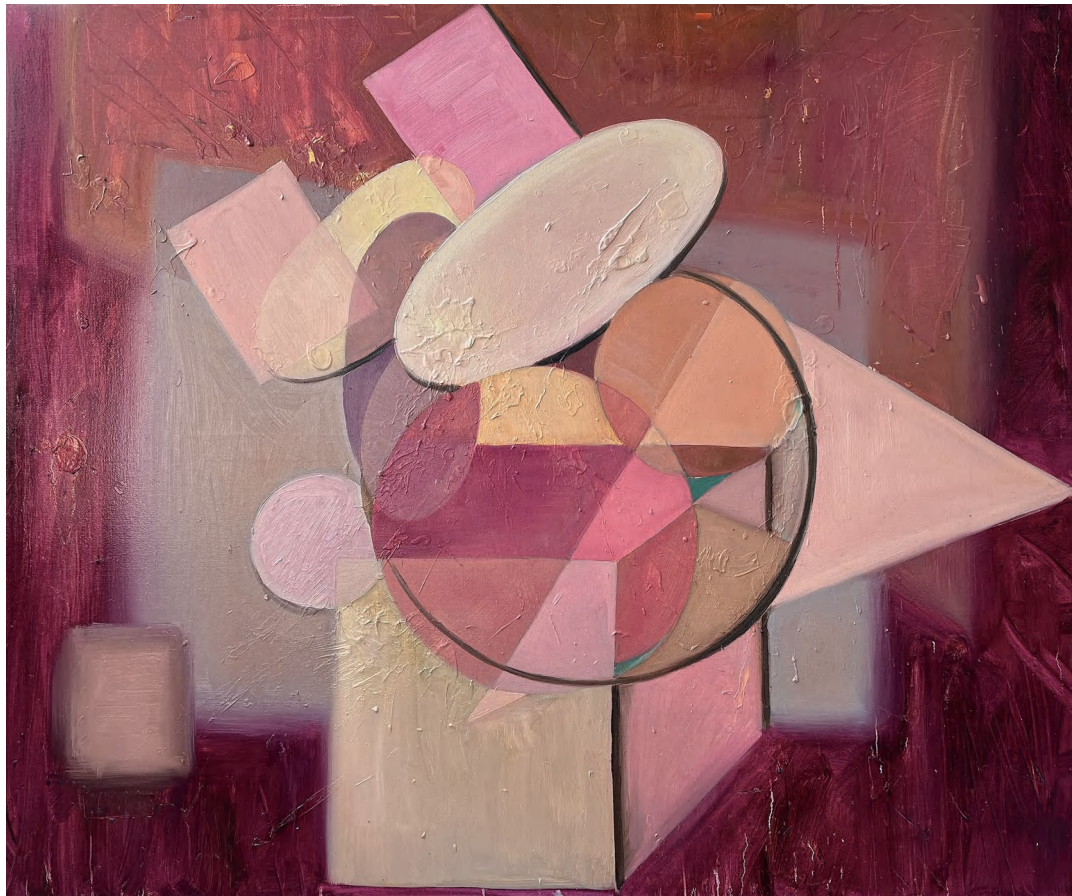
Mystery  
120×100cm







Song,soft and strong power.



**1005003**

Song  
120×100cm



## SHAN YAZHOU

Plants and light have become  
the most important part of life  
in the subconscious.

Glowing plants  
and light with plant memories  
instantly create a world.

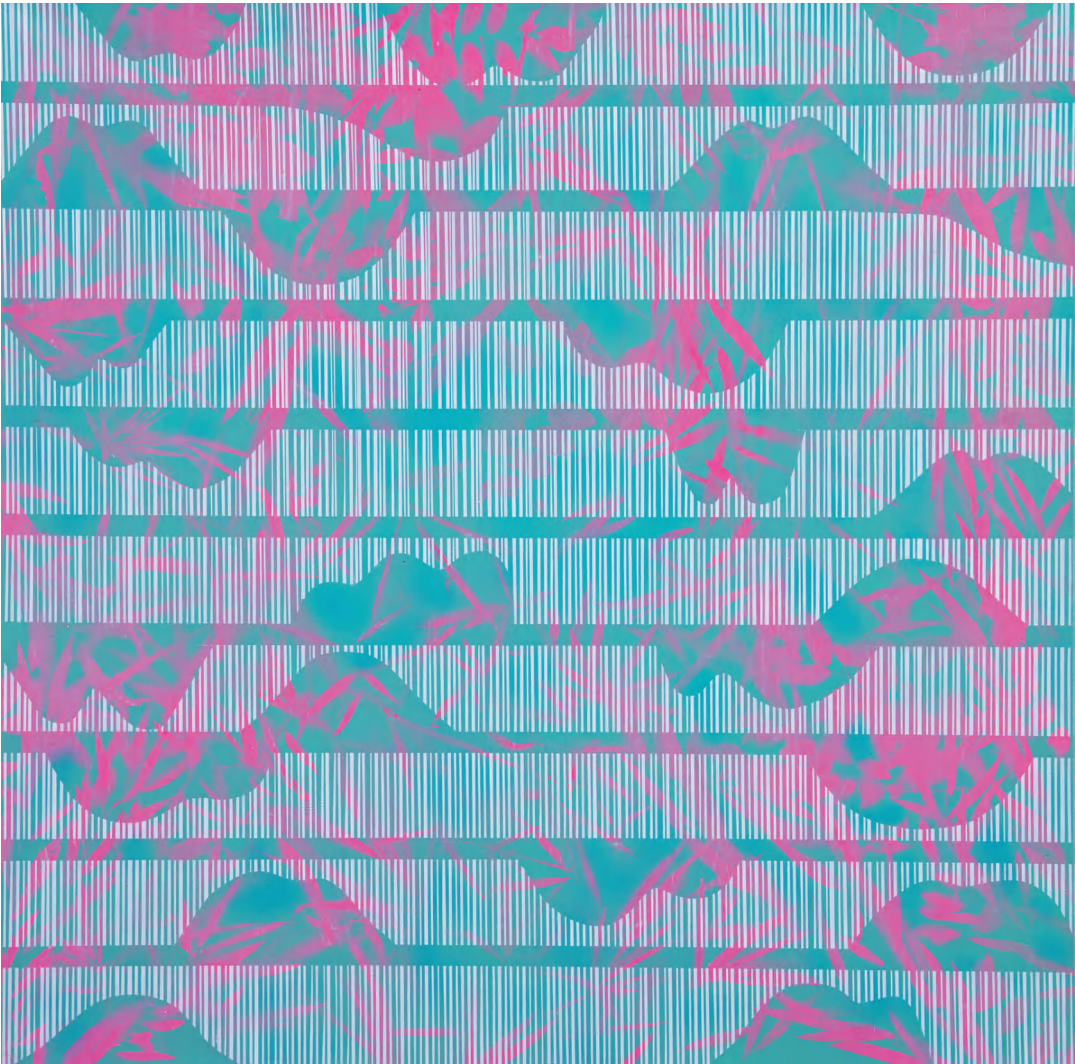
**Series of  
Art Piece**

Light  
in Memory  
Series



 ARTIST  
AUTHORIZATION

SERIES OF ART PIECE:  
LIGHT IN MEMORY SERIES



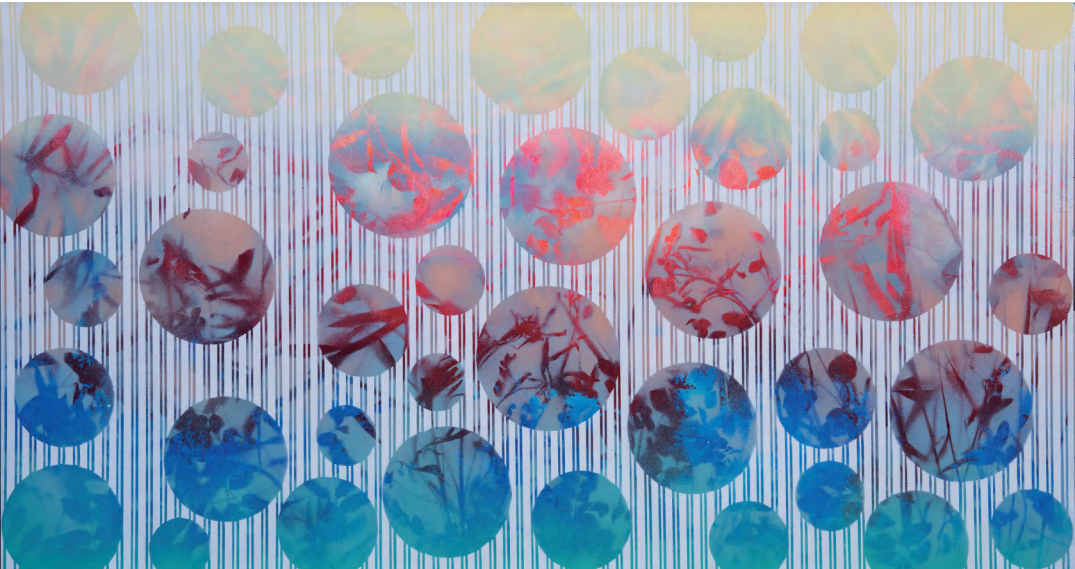
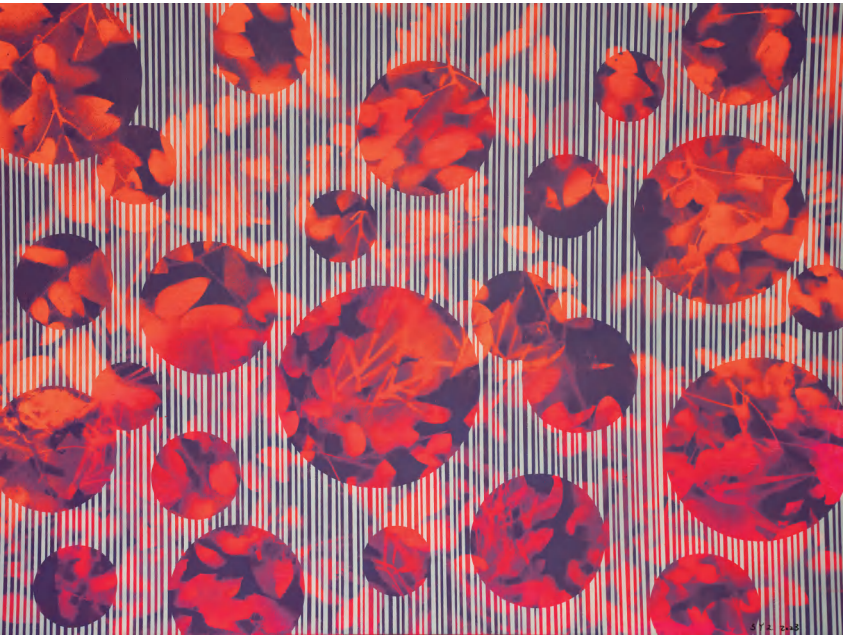
**1002001**  
Light in Memory-2023-10-2  
100x100cm

The light in memory reveals subtle microscopic details on the two-dimensional canvas, such as the layered background and overlapping effects of leaves.

These works are the result of multi-layered and multi-step creation, and require careful observation to discover their complexity.

**1002003**  
Light in Memory  
-2023-11-2  
80x60cm

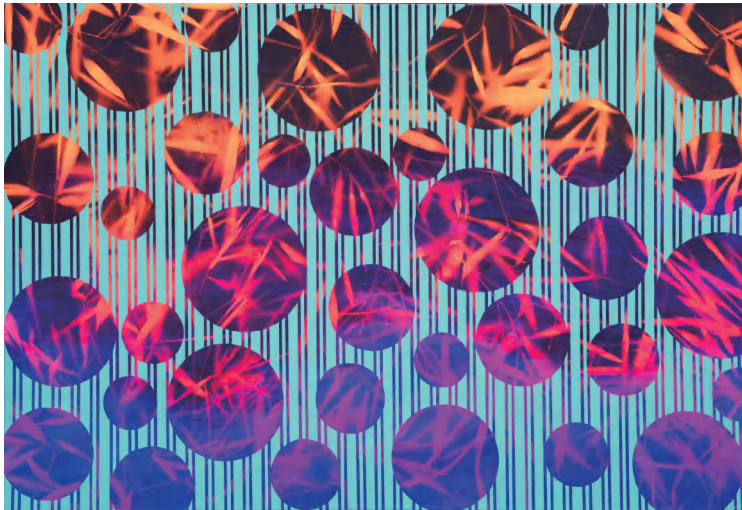
**1002005**  
Light in Memory  
-2024-6-1  
150x80cm





 ARTIST  
AUTHORIZATION

SERIES OF ART PIECE:  
LIGHT IN MEMORY SERIES

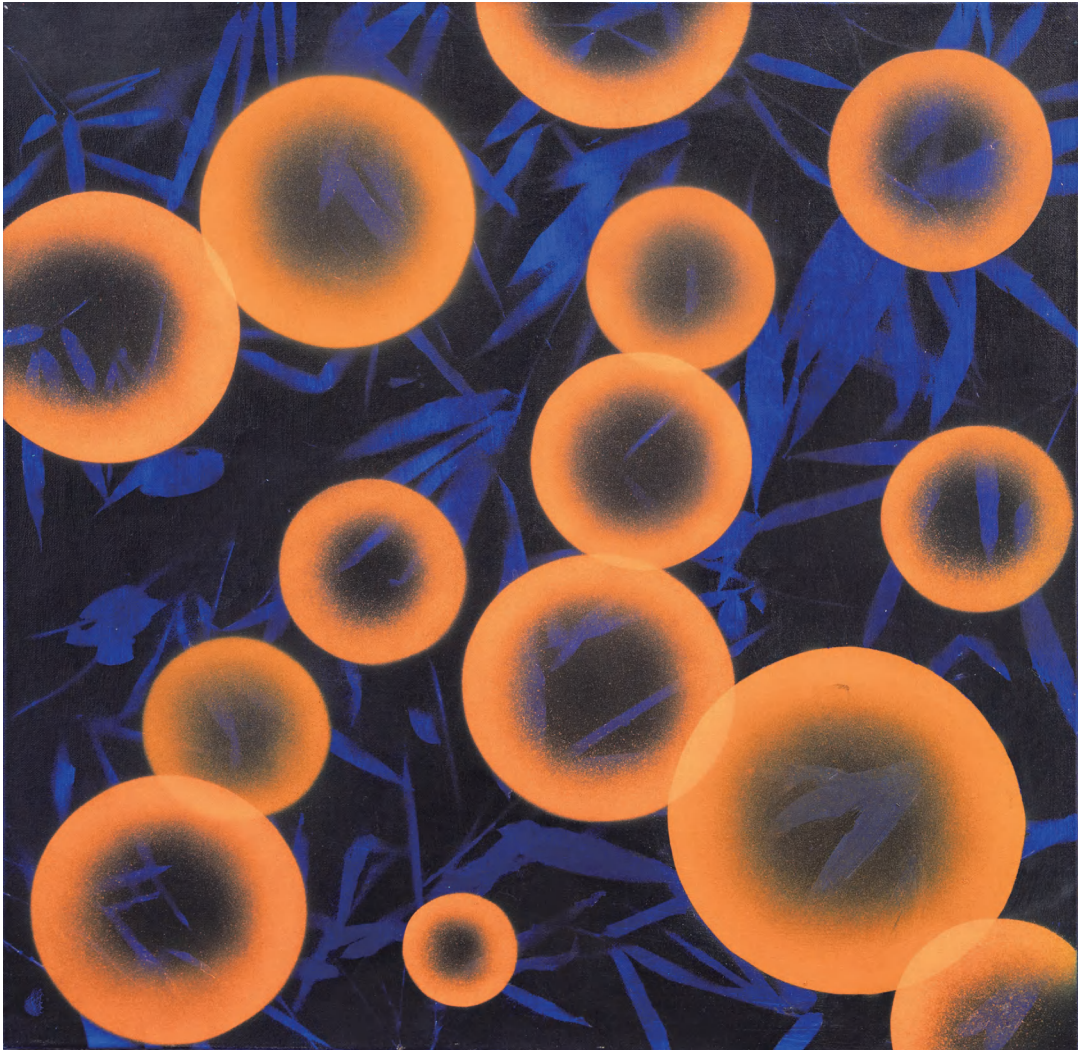


**1002002**  
Light in Memory  
-2024-5-5  
65x50cm

**1002004**  
Light in Memory  
-2024-4-2  
120x80cm

The light in memory reveals subtle microscopic details on the two-dimensional canvas, such as the layered background and overlapping effects of leaves.

These works are the result of multi-layered and multi-step creation, and require careful observation to discover their complexity.



**1002006**  
Light in Memory-2023-11-1  
60x60cm





### SERIES OF ART PIECE: LIGHT IN MEMORY SERIES

The light in memory reveals subtle microscopic details on the two-dimensional canvas, such as the layered background and overlapping effects of leaves.

These works are the result of multi-layered and multi-step creation, and require careful observation to discover their complexity.

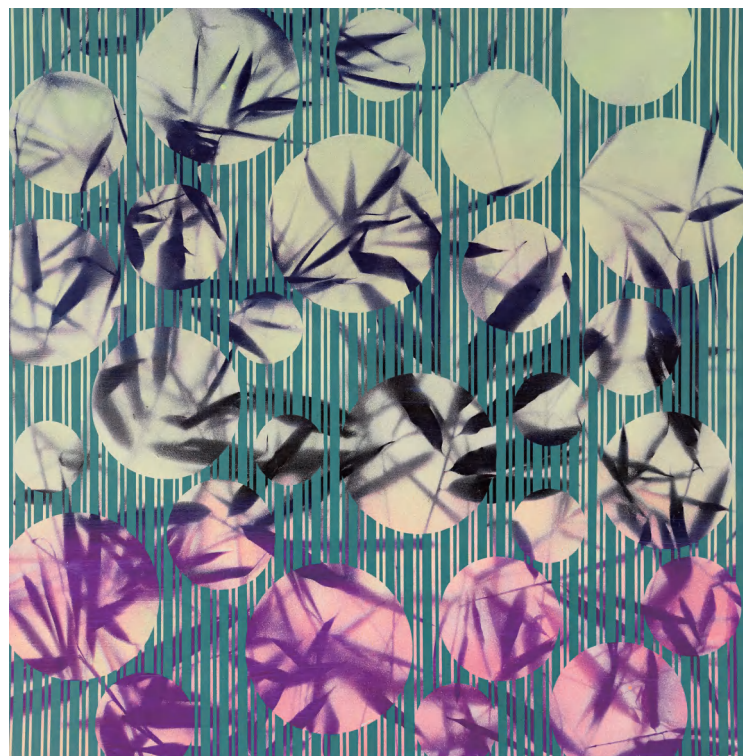


**1002007**

Light in Memory  
-2024-5-1  
80x80cm

**1002008**

Light in Memory  
-2024-3-1  
80x80cm



## GUO MINGXUAN



Trying to use abstract graphic language to interpret the problems caused by the criticism of the fragmented era, human sensitivity is gradually weakening, and what is obtained is the rapid output of information.

The work itself is the result of interpretation and transformation, and also the feedback of phenomenon and essence.

### Series of Art Piece

Underground City  
Series

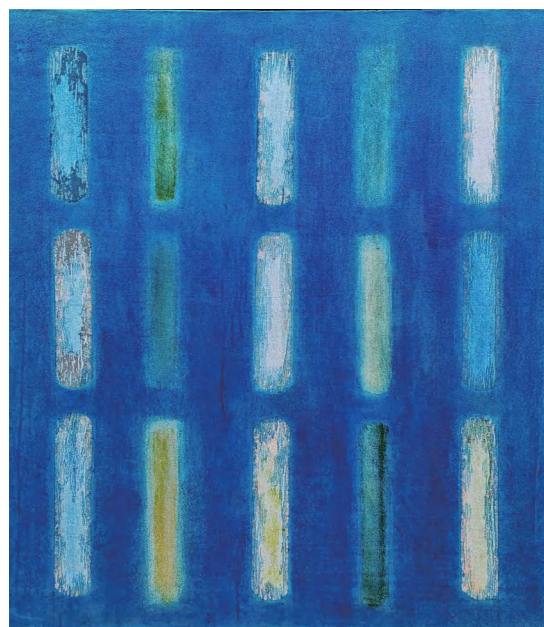




SERIES OF ART PIECE:  
UNDERGROUND CITY SERIES

The source of the creation of "Underground City Series" is the image of drainage channels that can be seen everywhere in our city.

It can be said that it is a symbol, or it can be said that it is a "derivative" under the norm.  
In my opinion, it is an exit to another world.



**1010001**

Underground City Series -1  
80x100cm



**1010002**

Underground City Series -13  
50x60cm



**1010003**

Underground City Series -12  
50x60cm



**1010004**

Underground City Series -14  
50x60cm





## JIANG LEI



He is skilled at using a rich palette of colors, especially the clever combination of warm tones and large expanses of color blocks, which creates a unique visual effect.

This use of color not only enhances the work's power of expression, but also guides the viewer's emotions, allowing them to immerse themselves in the atmosphere conveyed by the painting.

### Series of Art Piece

City Impressions

The use of rich colors, especially the clever combination of warm tones and large areas of color blocks, creates a unique visual effect.

This use of color not only enhances the appeal of the work, but also guides the viewer's emotions.



**1011001**

City Impressions  
130×100cm





ARTIST  
AUTHORIZATION

## LIU WENCHAO



Break away from the control of concreteness,  
abandon the visual experience generated by it,  
and express the most basic human emotions  
with the presentation of pure colors.  
It can come from concreteness,  
move towards color, and become a feeling.

It is the sea, jungle, flowers and plants,  
or it can be the romance of walking on the beach,  
running on the grassland,  
leisure with the breeze on your face,  
and release in shouting.

In this materialistic and restless world,  
keep a breath,  
let the dopamine beat,  
and feel the gift from space and color.

### Series of Art Piece

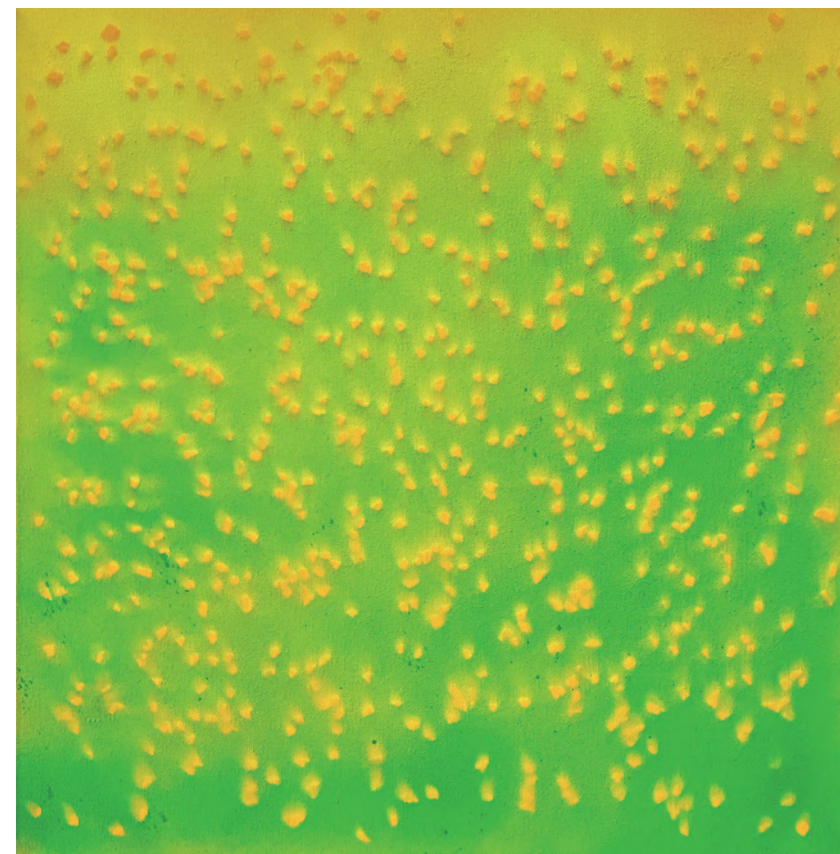
Dot Series

Line Series

Circle Series

### SERIES OF ART PIECE: DOT SERIES

Using dots as carriers,  
the scenes in consciousness are presented in an abstract form,  
showing the Grain Full in the 24 solar terms,  
a state of "almost full but not full",  
implying a good state of "full but not overflowing".



**1050001**

Dot Series: Xiaoman  
60×60cm



ARTIST  
AUTHORIZATION





### SERIES OF ART PIECE: LINE SERIES

This use of color not only enhances the work's power of expression, but also guides the viewer's emotions, allowing them to immerse themselves in the atmosphere conveyed by the painting.

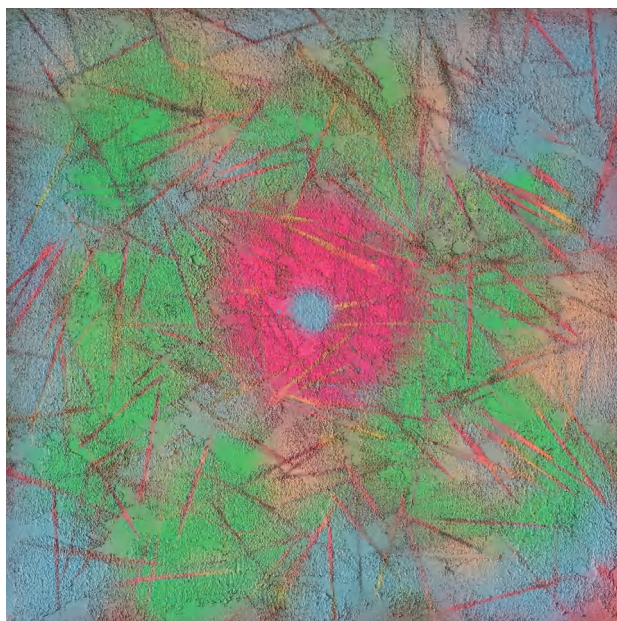
**1050003**

Line Series:  
By the Pond  
30×30cm



**1050004**

Line Series:  
Everything Returns to One  
30×30cm



**1050002**

Circle Series: Stacking  
50×50cm



### SERIES OF ART PIECE: CIRCLE SERIES

It's a mark, with a beginning and an end like a path;  
it's a flicker, flickering and is where the light comes in.  
It's brilliant, and its colorful appearance is fascinating;  
it's long, and the layered accumulation is the accumulation of time;  
it's everything, and everyone has a Hamlet in their hearts, and it is defined by us.





ARTIST  
AUTHORIZATION



## LI MAO

Art is a universal means of communication that transcends cultural and linguistic boundaries.

The essence of art lies in the spiritualization of the material world, and the core of this process is the unique mode of expression - the language form of art.

Through the skillful combination of elements such as color, line, and shape, profound emotions and ideas are conveyed, revealing a deep contemplation of life, culture, and the world.

### Series of Art Piece

Autumn Colors  
Series

Spring



ARTIST  
AUTHORIZATION

### SERIES OF ART PIECE: AUTUMN COLORS SERIES

The works are mainly based on intention and abstract forms, using some uncertainties in the creative process to achieve a combination of certainty and uncertainty, expressing the perception of natural changes and life.



**1013001**

Autumn Colors-1  
100cmx81cm



**1013002**

Autumn Colors-2  
100cmx81cm



ARTIST  
AUTHORIZATION

The works are mainly based on intention and abstract forms, using some uncertainties in the creative process to achieve a combination of certainty and uncertainty, expressing the perception of natural changes and life.

**1013003**Spring  
46cmx61cmARTIST  
AUTHORIZATION**LU CHENG FENG**

Employing a planar painting language to express the visual and psychological sensations evoked by 'artificial objects and artificial light' within the human living environment.

**Series of Art Piece**

Elevator Series

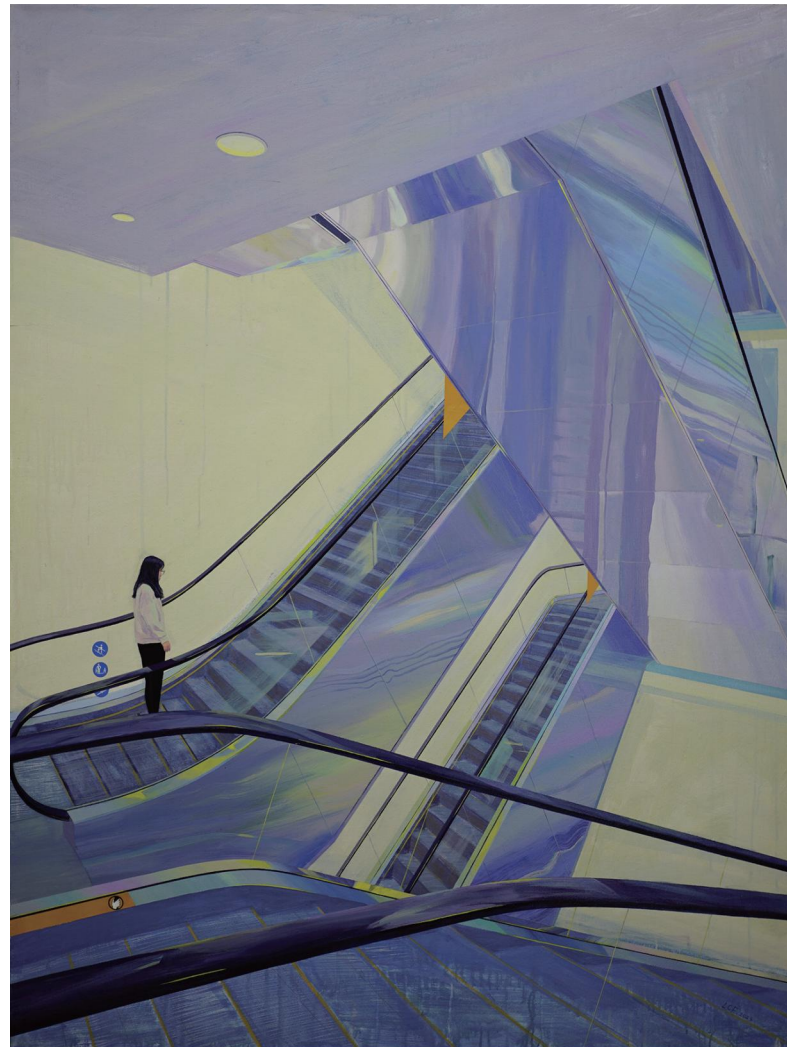
Up and Down Series

Neon No.1



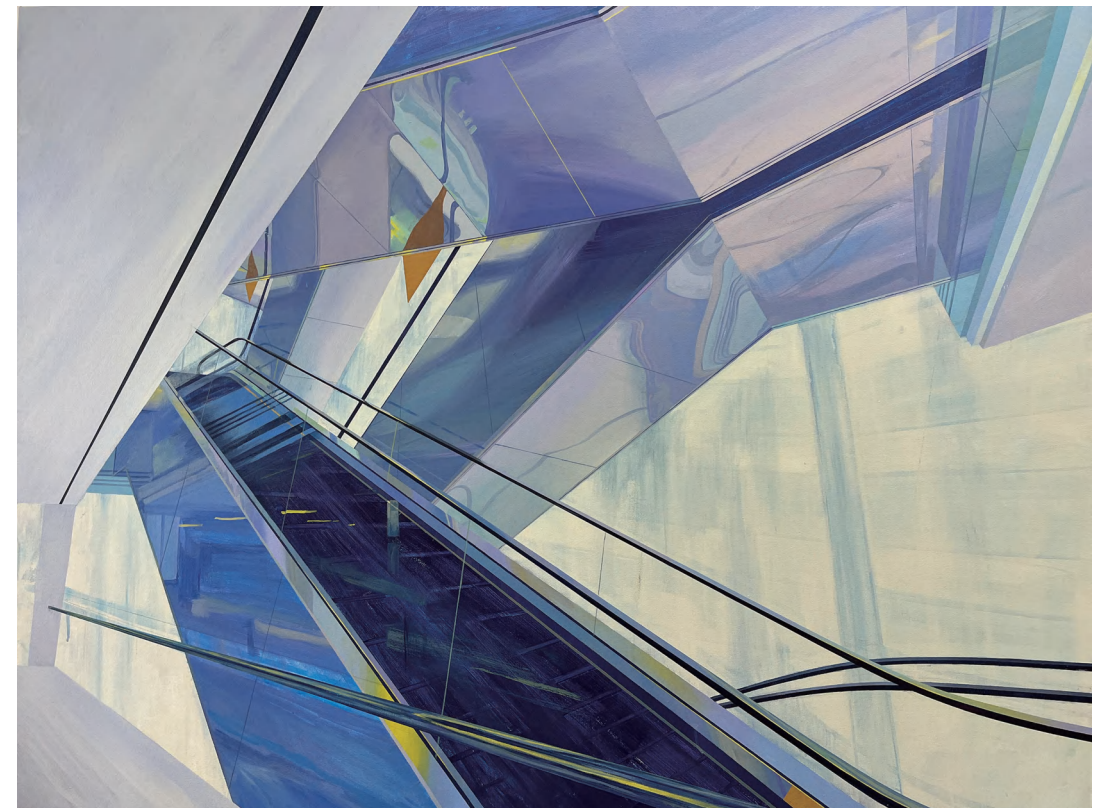


SERIES OF ART PIECE:  
ELEVATOR SERIES



**1019002**  
Elevator No.5  
120×160cm

use modern urban landscape as a carrier,  
and use the two-dimensional painting language to combine the landscape  
and personal feelings generated by the modernization of the city



**1019001**  
Elevator No.6  
160×120cm





ARTIST  
AUTHORIZATION

SERIES OF ART PIECE:  
UP AND DOWN SERIES



**1019005**

Up and Down No.3  
120×160cm

Trying to explore the personal visual  
and psychological feelings generated by "man-made objects and artificial light"  
in the current human living environment,  
and think about the opposition between  
"the illusion and reality of mirror reflection".



**1019004**

Up and Down:  
Neon Lights in the Mall  
50×40cm





Trying to explore the personal visual and psychological feelings generated by "man-made objects and artificial light" in the current human living environment, and think about the opposition between "the illusion and reality of mirror reflection".



**1019003**

Neon No.2  
160×120cm



## XIA ZHANGFENG



The intertwining of diverse materials, colors, and lines creates a unique visual language and emotional expression, allowing the viewer to deeply experience the artist's profound insights and delicate portrayals of the inner world.

### Series of Art Piece

Silent Bottle  
Series





ARTIST  
AUTHORIZATION

SERIES OF ART PIECE:  
SILENT BOTTLE SERIES



**1038002**

Bottle Series No.3  
50x60cm



**1038003**

Bottle Series No.4  
50x60cm

This series is composed of several simple everyday objects, such as bottles, cans, and vases. These objects are typically arranged in an orderly manner, emphasizing the spatial relationships and shapes between them.



**1038001**

Bottle Series No.2  
50x60cm





SERIES OF ART PIECE:  
UNTITLED SERIES

## DING TENGFEI



Looking for a way to reveal the nothingness of time  
and space and the state of existence.

The concepts of artistic creation are closely related to  
the notions of time and the void.

By unifying the process and result of painting,  
one can explore these concepts,  
as Heidegger mentioned - "being what it is and being as it is."

His works tend to lean more towards the pure contemplation of concepts,  
seeking to break free from reality and  
create another world relative to the real one.

**Series of Art Piece**

Untitled Series

I think about time, space and existence through my creations, and try to touch eternity,  
infinity and essence with my limited self and materials.



**1043001**

Untitled 2311-1  
100x100cm





### SERIES OF ART PIECE: UNTITLED SERIES

I think about time,  
space and existence through  
my creations,  
and try to touch eternity,  
infinity and essence with  
my limited self and materials.

**1043002**

Untitled 2311-2  
100x100cm



**1043003**

Untitled 2311-3  
100x100cm



## CHEN CHUNYAN



In my own paintings,  
I prefer to express myself through  
the use of color blocks.

Firstly,  
color blocks can convey a sense of inner calmness, and  
they can also embody  
the philosophical ideas of density, size, complementarity,  
and dynamism.

I also employ thick,  
impasto brushstrokes to heighten the contrast and  
express the restlessness and unease within me.

Painting art is rather self-indulgent,  
it does not allow for the direct emotional expression  
found in music or film.

Painting art is more about the mutual admiration  
and learning between kindred spirits.

### Series of Art Piece

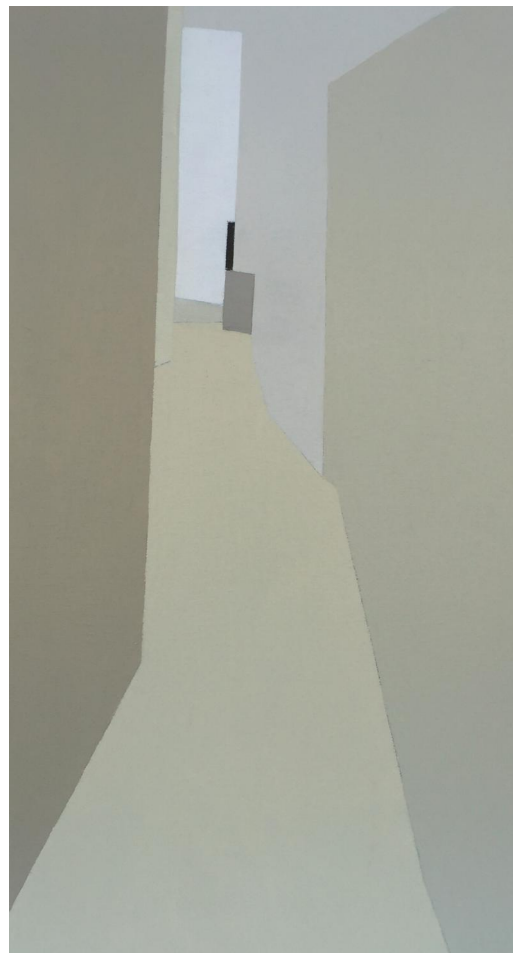
House Series





SERIES OF ART PIECE:  
HOUSE SERIES

It is simple and plain.  
It is a reflection of my attitude towards life and values.

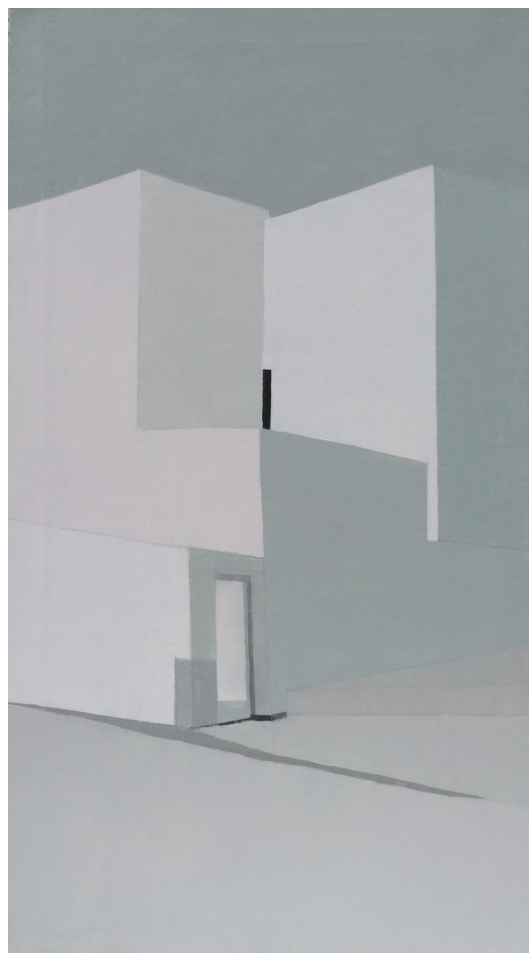


**1047001**

House 2  
45x80cm

**1047002**

House 3  
45x80cm

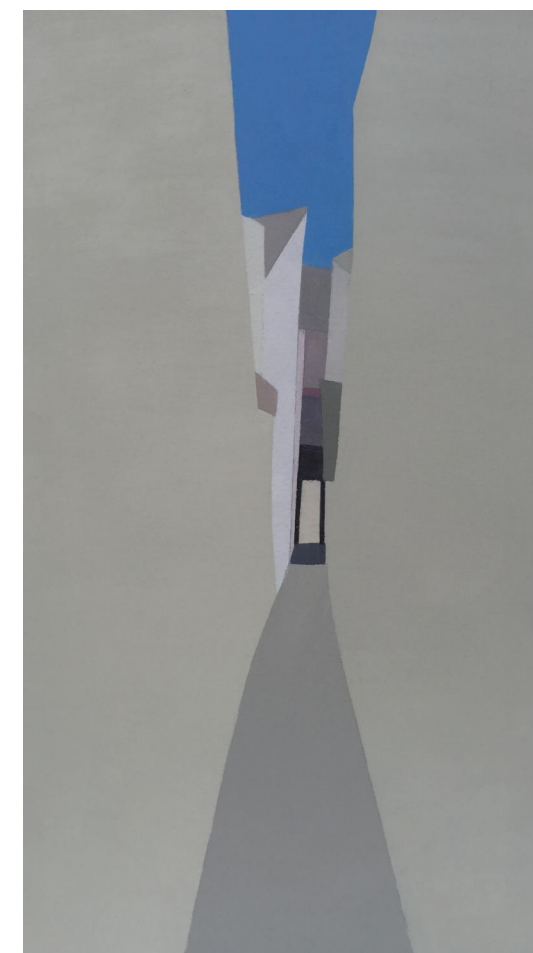


**1047003**

House 5  
45x80cm

**1047004**

House 6  
45x80cm







SERIES OF ART PIECE:  
HOUSE SERIES

It is simple and plain.  
It is a reflection of my attitude towards life and values.



**1047005**  
House 7  
45x80cm



**1047006**  
House 8  
45x80cm



**1047007**  
House 9  
45x80cm



**1047008**  
House 10  
45x80cm





## LI BUYI



The fusion of social reality and abstract art,  
dedicated to reflecting on social phenomena  
through an elusive yet heartfelt artistic language.

Analyzing, reorganizing,  
summarizing, balancing,  
and subverting from a dual perspective of the first and third person,  
so that the work possesses both substantial artistic value  
and profound conceptual significance.

### Series of Art Piece

Witch Dream



In reality,  
we are surrounded and coerced by utilitarian material temptations.  
Only in dreams can we use the power of witches to find spirituality.

Human nature starts from two perspectives:  
one is our external worship of witch gods,  
and the other is the internal awakening of self-divinity.



**1048001**

Witch Dream  
80x80cm



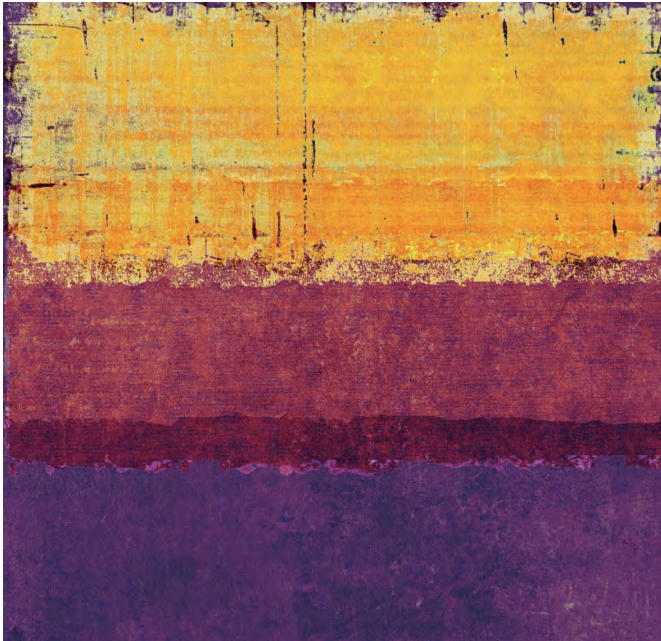
# ART TRENDS

Explore new trends to find your style  
and discover the art of you.



**1000026**  
16X22cm

# ART TRENDS

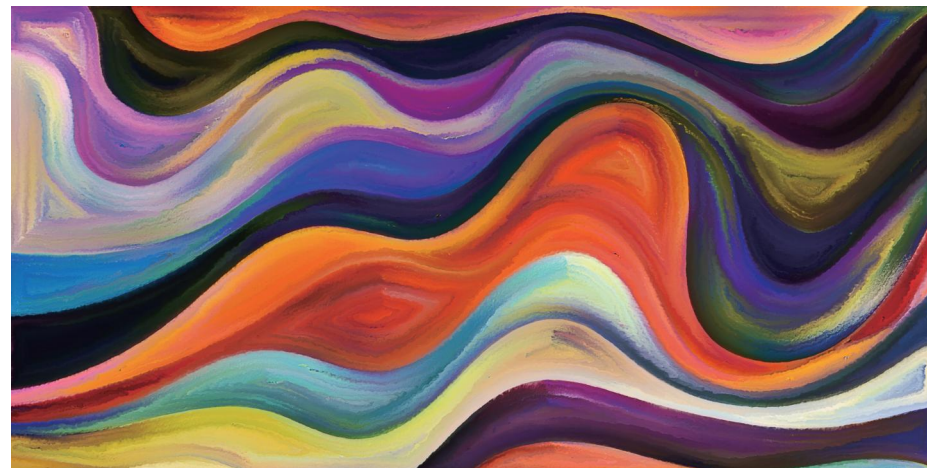


**1000022**  
22X22cm

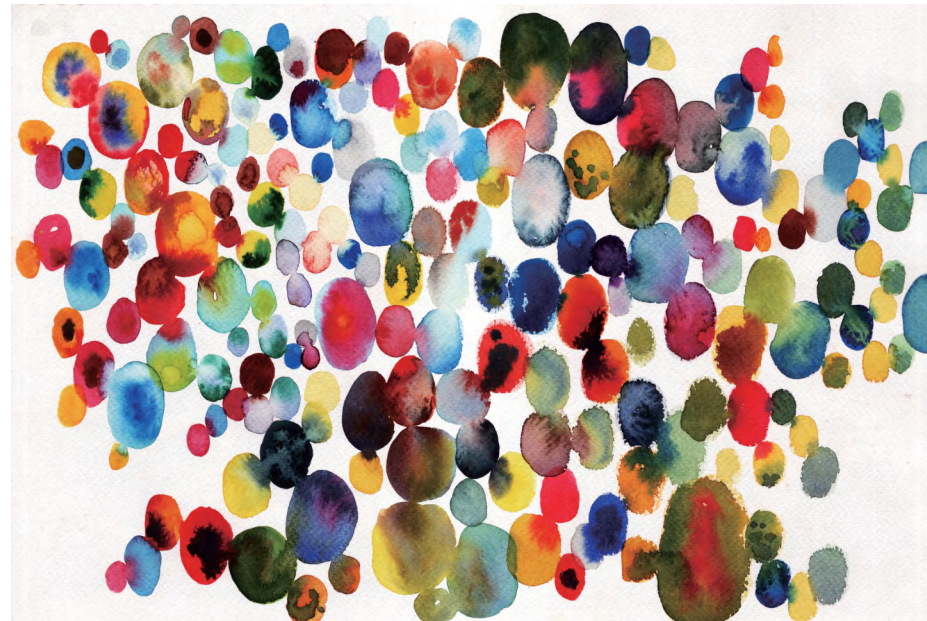


**1000025**  
22X22cm

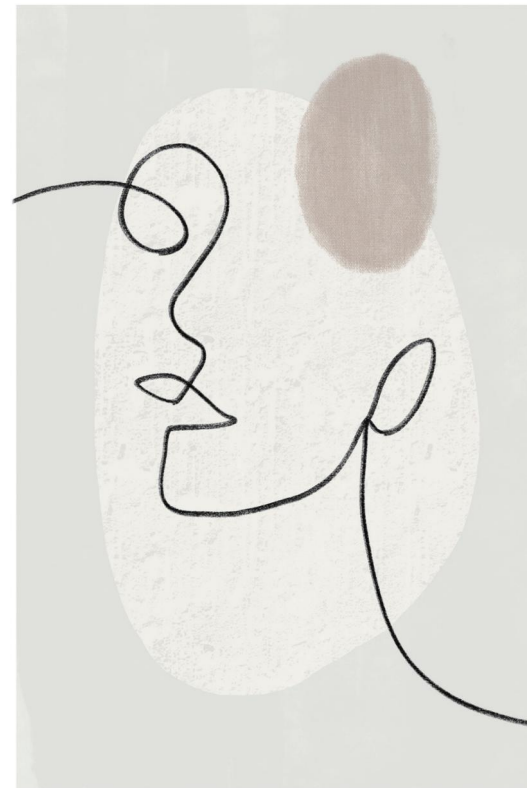




**1000023**  
45X22cm



**1000024**  
33X22cm



**1000026**  
15X22cm



**1000027**  
16X22cm





# LANDSCAPE SERIES

The Landscape Series captures the captivating beauty of nature, from the rolling hills that undulate gracefully, to the majestic peaks that rise towards the heavens, to the alluring coastlines, inviting you to immerse yourself in the tranquility of the natural world.

The language of scenery is the language of emotion.

In the creative process, the investment and expression of emotion is of utmost importance.

It is not just about depicting the natural scenery of the seaside, but also about expressing one's own insights and emotions about seaside life.

Through elements like color, brushstrokes, and light and shadow, the work conveys a tranquil, serene, and slightly melancholic emotional atmosphere.



## DENG DIAN

### Series of Art Piece

- Summer
- Seaside Breeze
- Sunset and Sea





The foreground color is mainly green, with yellow and brown.  
The trees are of different shapes, and the frame effect of the trees guides the line of sight into the distance, creating an open and peaceful atmosphere.



**1007001**

Summer  
30x30cm



The tranquil beach is rich in color, with different shades of blue on the sea surface.  
The texture of the tree and the waves on the sea are expressed dynamically through rough brushstrokes.



**1007003**

Seaside Breeze  
80x80cm





The sky is covered in orange and yellow colors, conveying the peace and beauty of the sunset through color, light, shadow and composition. The elements blend harmoniously to create a peaceful and warm atmosphere.


**1007002**

Sunset and Sea  
80x80cm



## LIU HAOTIAN



Transcending traditional realism.

Choosing a surreal interest,  
in the midst of the vibrant and flamboyant oil painting colors  
and the magical and novel modern art,  
it still maintains a sense of clarity and tranquility.

**Series of Art Piece**

European Landscape  
Series





SERIES OF ART PIECE:  
EUROPEAN LANDSCAPE SERIES



**1018001**  
Eastern  
European  
Imprint  
60x80cm

In the paintings,  
I used colors, fields, tones, etc.  
as artistic languages to enrich my personality  
and embody the beauty of philosophy  
and poetry.

I reduced the overall saturation  
of the colors and used the "gray" tones.

For me, gray is the most poetic and profound  
idea and an important "hidden line".



**1018002**  
Warsaw Old Town  
50x60



**1018003**  
Warm Winter  
30x40cm





# YANG JIANDONG



Painting is a part of life,  
emerging from every moment of inspiration drawn from life.

By attentively observing and examining nature,  
the artist refines the aesthetics and forms found within it,  
exploring the formation of the natural space in the painting  
and the relationships  
between the compositional elements.

## Series of Art Piece

Twilight at Dianchi Lake



I often go to wetlands to sketch.  
In late autumn and early winter,  
the Metasequoia trees appear very bright red under the setting sun,  
and the sunset glow rises and falls with the ripples of the lake.

When I return home, I encounter the sun,  
moon and lake light, and thus I got the work "Twilight at Dianchi Lake".



**1029001**

Twilight at Dianchi Lake  
50x40cm





# TAN YU ZHUO



There are scenic views everywhere in life,  
everywhere is material for creation.

## Series of Art Piece

Twilight - River City

River-City Series No.3

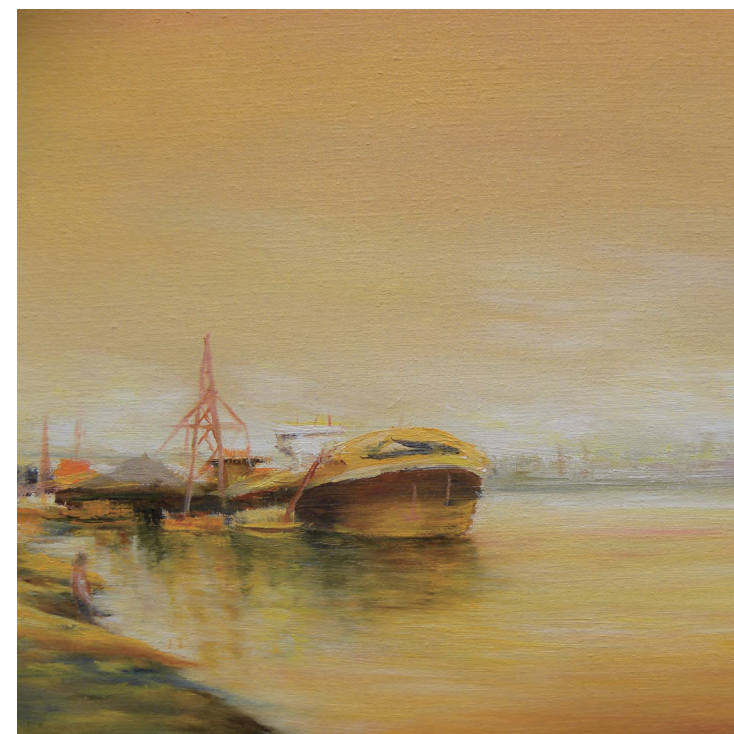
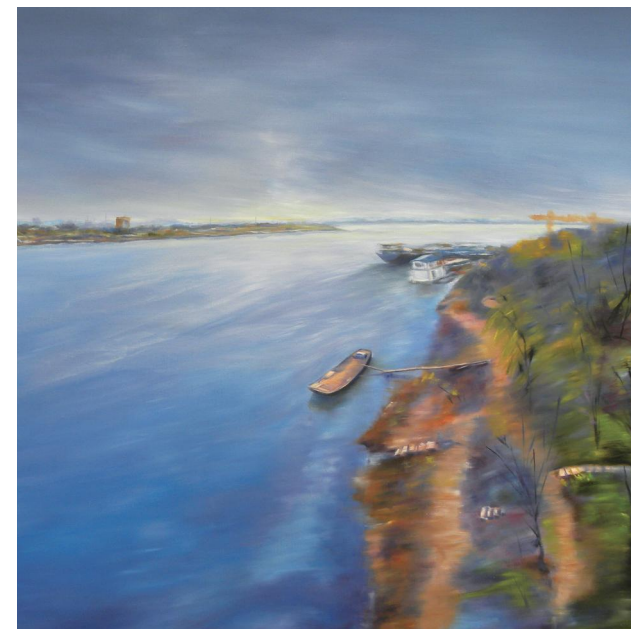
Winter Melody of  
Xiangjiang River



The blue-gray sky, the blue river,  
the moored fishing boats,  
the world in front of me  
is covered with beautiful blue sky  
and white clouds, like a filter.

**1040003**

Twilight - River City  
100x90cm



The orange sky and river,  
the moored fishing boats,  
the world in front of me  
is covered  
by the beautiful sunset,  
like a filter.

**1040002**

River-City Series No.3  
40x30cm





The gray sky, white snowflakes, moored fishing boats,  
and the world in front of me are all covered with beautiful white snow.

When the heart is the calmest and most comfortable,  
it is always easy to arouse infinite reverie.



**1040001**

Winter Melody of Xiangjiang River  
60x80cm



## CHEN ZHUOMING



While primarily focusing on figurative realism,  
the artist is adept at infusing spirituality  
and deep care into his paintings,  
while exploring the combination of Chinese artistic conception  
and Western techniques.

Pursuing the artistic conception and style of the work,  
aiming to achieve the aesthetic effect  
of the audience's understanding.

The pursuit and exploration of the abstract beauty  
of the inner self has enabled the figurative painting forms  
to transcend the banality  
and triviality of the objective world.

**Series of Art Piece**

Fireworks





ARTIST  
AUTHORIZATION

The scenery that Winnie captured is meant to express the current life,  
a state of fireworks where people work from sunrise to sunset and rest from sunrise to sunset.



**1006001**

Fireworks  
80x80cm



ARTIST  
AUTHORIZATION

## ZENG BIN



Capturing the rhythmic spirit of nature,  
fusing traditional techniques  
and modern perspectives.

Expressing the heart's resonance  
through the paintbrush,  
revealing the splendor of mountains  
and rivers.

### Series of Art Piece

Night Rain in Bashan

Tillage

Charm





The Night Rain in Bashan outlines the steep mountains of Bashan with heavy ink and colors.

Lights can be seen through the drizzle.  
The mountains are overlapping and shrouded in clouds and mist, presenting a quiet and mysterious night painting of Bashan.



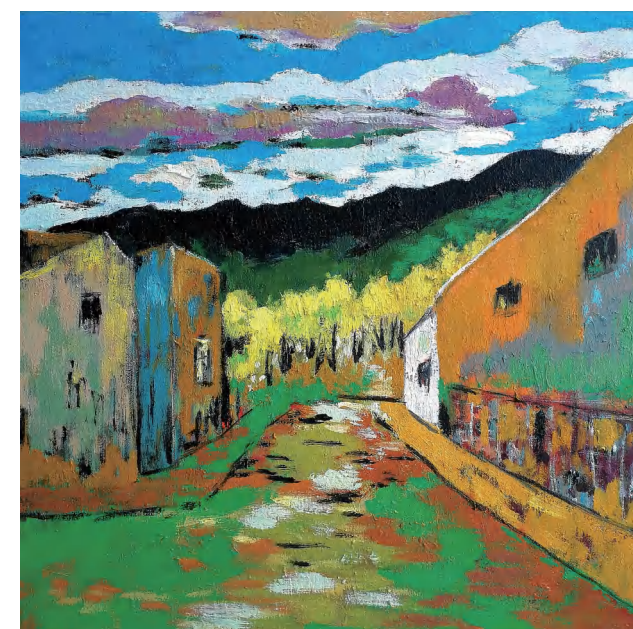
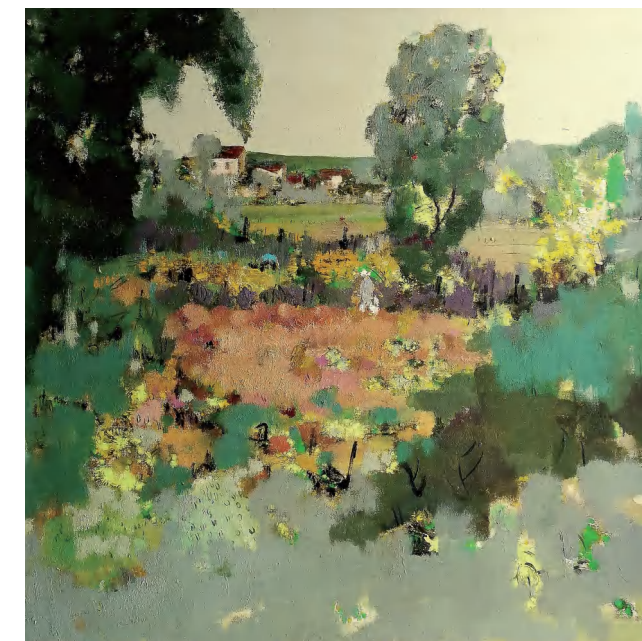
**1003001**  
Night Rain in Bashan  
150x100cm



Tillage shows the hard work of farmers in the fields with delicate brushstrokes and rich colors.

The picture is full of the breath of life and the power of labor, conveying the awe of nature and the love of life.

**1003002**  
Tillage  
100x100cm



Charm uses warm tones and delicate brushstrokes to depict a house bathed in brilliant sunshine, surrounded by green trees and flowers.

The picture is full of vitality and harmony, as if one can feel the warmth of the sun and the tranquility of nature.

**1003003**  
Charm  
50x50cm





## FAN HUIFEI



Striving to convey the spirit of freehand painting.

Embodying both personal characteristics  
and contemporary relevance!

### Series of Art Piece

Snow Plateau

Bamboo Forest



In the north in winter,  
the cypress trees are green  
and covered in silver.

The snow-covered mountains  
and the orange-red cypress trees  
at the foot of the mountains  
complement each other,  
showing the prosperity and  
beauty of winter!

**1009001**

Snow Plateau  
150x150cm

The empty forest  
is deserted,  
but the scenery  
is everywhere.

A few rays of sunlight,  
a few chairs,  
and a path are like pearls  
and jade,  
with colors and shapes  
that add to the charm.

**1009002**

Bamboo Forest  
100x80cm







## MEI YINYUE

Immersed in the hustle and bustle of the city,  
people often long for the purity and tranquility of nature.

Yet, after spending too much time in nature,  
one inevitably yearns for the vibrant bustle of the city.

Landscape painting is not merely a mimicry of the external world,  
but a contemplation on the world.

The towering mountains, the rushing rivers, the urban scenes,  
the warmth and coldness of human interactions  
in paintings flow like a poetic verse,  
evoking a three-part sigh that lingers in the viewer's mind.

Series of  
Art Piece

Inner Mongolia  
Lake



Desert, oasis, Moon Lake, unfold a beautiful picture scroll,  
my painter friends are painting the poetry in their hearts.



**1021001**

Inner Mongolia Lake  
50x40cm





## SHI HAOCONG



### Series of Art Piece

Mountain  
Series

Painting employs techniques of composition and color to depict the relationships and distances between objects and their environment, creating a visual effect.

In the painting process, different perspectives are used to experience the space within the artwork, where objects are integrated with their surrounding environment while maintaining their individual identities.

The challenge is to create a harmonious coexistence across the entire canvas while also expressing the unique sensory experience of a particular world, whether it be still life, a scene, a landscape, a river, mountains, or clouds.

These elements must have a hierarchical relationship within the composition, each with its own distinct form.

Finding the balance between fluidity and solidity, where the painting's texture feels like water yet remains cohesive, is the goal.



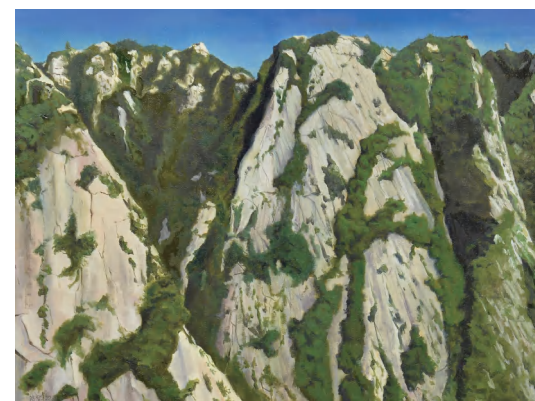
## SERIES OF ART PIECE: MOUNTAIN SERIES

Qingshan is a creation of Huashan landscape sketches. This is also based on the intuition stimulated by sketches.

The visual emotions brought to me by visiting Huashan, the Western Peak, led me to turn to painting creation.

In terms of painting techniques, I adopted the Impressionist approach to the instantaneous nature of light and shadow and the brushstrokes of Chinese landscape painting.

Visually, the wide-angle effect is used to express the majestic and steep natural scenery of Huashan.



**1023001**

Mountain  
160x60cm



**1023002**





## XIA HUI



The dreamlike and detached quality of the painting is evident.

The hazy, leisurely skies, ravines, flora and fauna, as well as the enigmatic thoughts, emotions and expressions, constitute a visual form reminiscent of the collective unconscious, evoking imagination and hallucination.

Whether on an individual or collective level, there is a sense of elusive insights, prayers and desires that can be found within the realm of dreams.

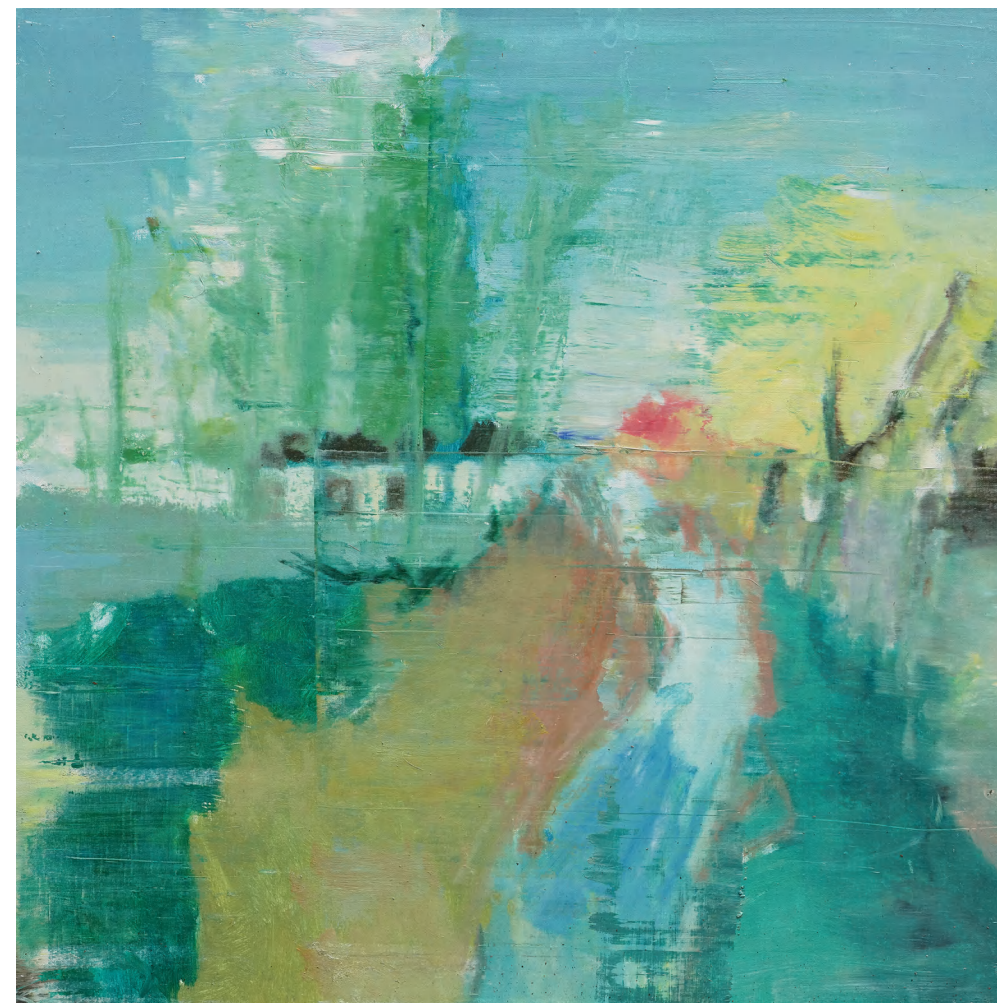
### Series of Art Piece

Hazy Series



### SERIES OF ART PIECE: HAZY SERIES

Hazy Series attempts to express the cognition and understanding of the eternal harmony in the universe with modern abstract and concrete artistic language.



**1028002**

Liyuan-path  
80x80cm





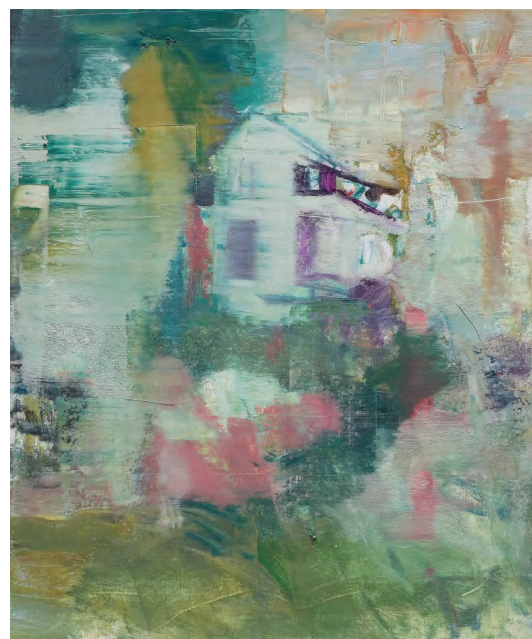
### SERIES OF ART PIECE: HAZY SERIES

Hazy Series attempts to express the cognition and understanding of the eternal harmony in the universe with modern abstract and concrete artistic language.



**1028001**

Liyuan-Lihu  
50×60



**1028003**

Maoshan Dream Village  
50×60cm



## ZHANG YOUWEI



In artistic world,  
the mountains and rivers of hometown  
are an inexhaustible source of inspiration.

Every undulating peak is  
like a majestic movement composed by the earth;  
every winding stream is like a gentle poem  
sung by the years.

### Series of Art Piece

Winter Rhythm

Hymn

Munigou  
Sketching





The picture shows the scenery of early winter on the northwestern Sichuan plateau, expressing a feeling of tranquility and far-reaching tranquility.



**1035001**

Winter Rhythm  
40x50cm



Listen to the singing of spring water among mountains and rivers.

**1035002**

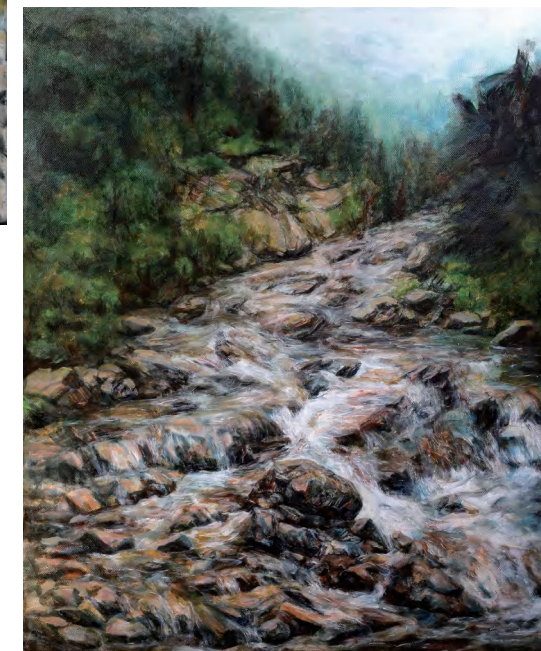
Hymn  
40x50cm



Landscape Sketches  
in Aba Prefecture.

**1035003**

Munigou Sketching  
100X120cm







ZHAO JING



The abstract language of dots, lines,  
and planes constitutes the figurative postures of life.

The expectation is to find life within the painting,  
whether in its splendor or decay,  
all of which can be abstracted and symbolized,  
returning to the resilient origins of life.

Series of Art Piece

Winter in Hetao  
Series

SERIES OF ART PIECE:  
WINTER IN HETAO SERIES

Sunflower standing on the earth.  
When the flowers bloom, they are brilliant and splendid, without any implicit meaning;  
when they are fruitful, they dry up and weather into copper color,  
and can face the end of life calmly.

When winter comes,  
the sunflowers that have not been harvested in time are like bronze castings,  
standing proudly in the wind and snow In the middle,  
never give up and live forever.



1036001

1036002

Winter in Hetao  
134x180cm

1036003





## TANG ZHENYU



The world on the canvas  
will become a self-sufficient world.

Once it has its own soul, it will forget itself,  
and he will slowly follow along.

Painting is also a form of labor.  
It hopes to discover its own nature through this labor.

The Western artist Schneur once said  
that art will either turn you into an angel or a mother.

In the process of Eastern meditation,  
art is an ancient craft.  
Why use the word "gate"?  
Because it is also a kind of spiritual practice in some sense  
and in Zen practice,  
the ability to use one's hands is said to  
be a crucial gateway among the many gateways  
to pass through.

Painting is a natural inheritance,  
as well as a craft.

### Series of Art Piece

Sign of  
the Times

Ancient  
Temple



The overall work visually presents  
a gradual transition from tradition  
to modernity,  
from simplicity to technology.

**1037001**

Sign of the Times  
70x90cm

Under the traces of history,  
its broken body still stands  
in the city after the historical  
sedimentation,  
witnessing the changes  
of the times.

**1037002**

Ancient Temple  
50x140cm







## WANG XING

In this bustling and noisy world, we often forget the power of art,  
forgetting that it has the ability to change our perspectives  
and touch our inner selves, awakening our reflections.

Art is like a mirror,  
reflecting the world within us and inspiring us to explore and ponder.

Art is a form of expression, exploration, and discovery.  
It discovers the beauty in life and expresses our love for it.

### Series of Art Piece

Forest Gray



Forest Grey has a peaceful and mysterious atmosphere.

Walking in the forest is particularly peaceful, as if you have turned into a tree in the forest.  
I try to capture this unique feeling through painting and present it.

Through these works,  
I hope to arouse visitors' love for nature and awareness of environmental protection.

Forests are a gift from nature, and we should cherish and protect them.

At the same time,  
forests also represent the hope and tenacity of life.  
There is vitality and hope in every corner of life.



**1045001**

Forest Gray  
120×80cm





## LI YANLING



Exploring the diverse presentation of the rare color woodblock prints of Yunnan, with dance as the main creative theme, integrating the local dance customs into the printmaking creation.

In the life of ethnic minorities, dance appears at the important milestones, whether on an individual or collective level.

Dance is the carrier of people's emotions, reflecting their spiritual world and vitality.

### Series of Art Piece

Autumn on the  
Ancient Path



The 'ancient road' symbolizes the Ancient Tea Horse Road, carrying rich historical and cultural memories; the 'wild grassland' represents the vastness of the earth and the thriving of life.

The use of vibrant colors such as golden yellow, earthy red, and ochre, as well as the layering of brushstrokes, imbues the work with a romantic, lyrical character.



1046001

1046002

Autumn on the Ancient Path  
90×180cm

1046003





LI WEIWEI



To capture the fleeting sensations experienced within the surrounding environment, the work achieves a fusion of subjective and objective elements through the processes of 'taking form, coloring, and imbuing with spirit', recreating the scene.

Series of Art Piece

Colorful Clouds  
over the Mountain

The colorful cloud stream on the other side of the mountain is the answer, and it is also my externalization of artistic feelings, taking its shape, endowing it with color, giving life, and presenting instantaneous feelings.

Hope to convey the pursuit of light, the answer lies within oneself, what is beyond your mountain?



**1049001**  
Colorful Clouds over the Mountain  
80\*100m





## ZANG LUJUN



Nature is the central theme of my artistic creations, as I strive to be deeply connected to and appreciative of the natural world.

My aim is to capture the fleeting yet profound moments of inspiration and the emotionally resonant instances that arise in our everyday lives.

From the changing seasons: spring, summer, autumn, and winter, each possesses its own distinct beauty as time flows onward.

Every component of the natural landscape, whether a single blade of grass, a towering tree, majestic mountains, or flowing waters, emanates its own inherent vitality.

Nature provides us with boundless sources of inspiration and imagination.

My works are akin to poetic tributes to the natural realm – effortless, joyful, and soothing to the human spirit.

### Series of Art Piece

Trees  
in Winter

In the November chill of winter, the dawn redwoods have not yet fully shed their leaves. Their slender trunks stand tall amidst the forest, graceful and beautiful.



**1051001**

Trees  
in Winter  
60x90cm





## LI WEI



Blending figurative forms and abstract connotations, the work creates a unique and captivating visual experience.

It outlines a profile of the artwork that is imbued with personality and dynamism, where personalized artistic patterns and lines interweave, with each element showcasing a distinctive and vibrant artistic style.

### Series of Art Piece

Dai Minority Compound

Idyllic Village Scenery



The Dai minority dwellings, weathered by time, still stand tall and proud.

This is a relatively aged residential structure, a crystallization of the wisdom of the Dai people, and a manifestation of the traditional Dai architectural culture.

### 1052001

Dai Minority Compound  
50X60cm



This is the Shenquangou Artist Village scenic area in Changshun County, Guizhou Province.

The scenery is picturesque, and artists from all over the country often come here for sketching and creative work.

I use my paintbrush to record this beautiful landscape, as if wandering through a painting.

### 1052002

Idyllic Village Scenery  
50X60cm



# ART TRENDS

Explore new trends to find your style  
and discover the art of you.



**1000005**  
17X22cm

# ART TRENDS

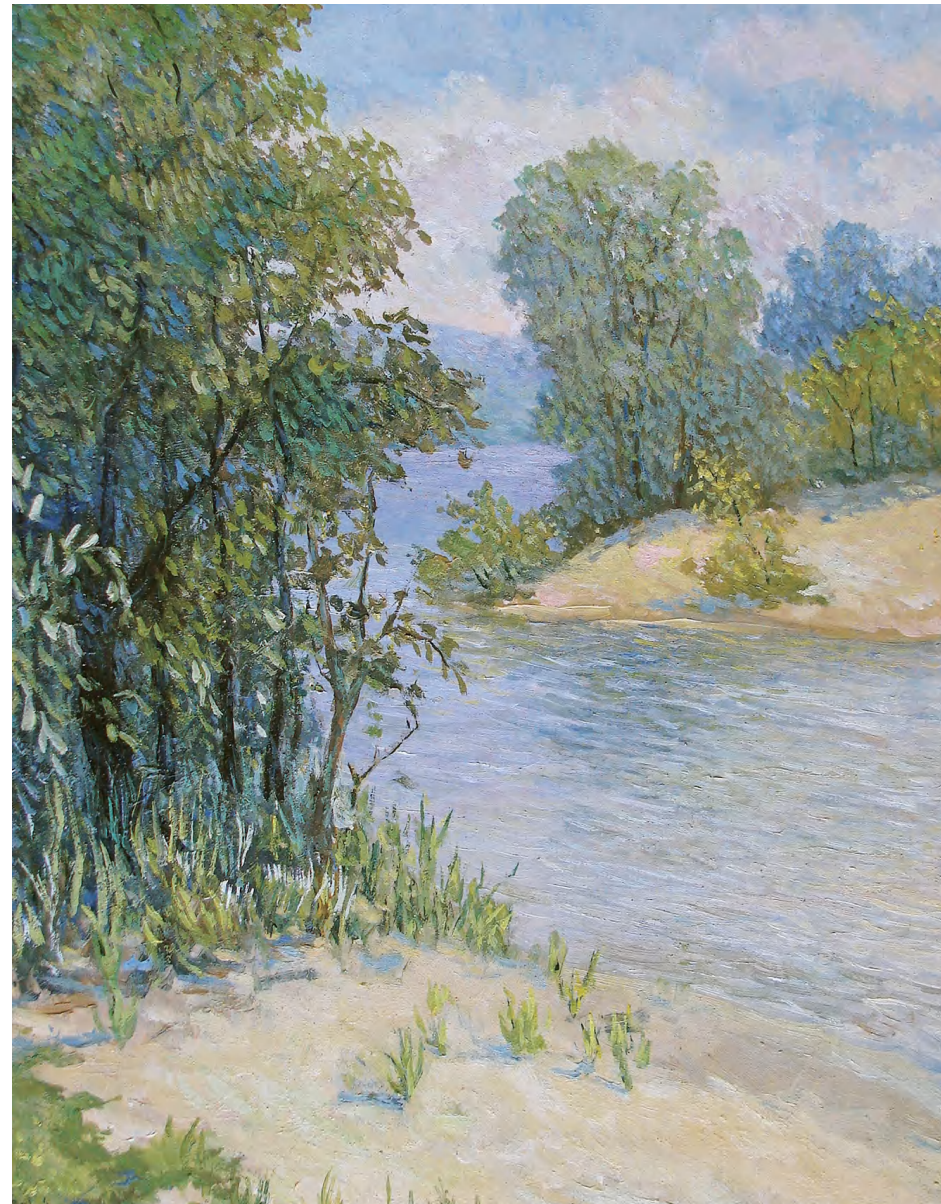


**1000012**  
30X22cm



**1000011**  
34X22cm





**1000004**  
22X16cm



**1000003**  
33X22cm



**1000007**  
44X22cm





**1000019**  
33X22cm



**1000008**  
33X22cm



**1000020**  
28X22cm





**1000013**  
17X22cm



**1000015**  
30X22cm



**1000016**  
45X22cm



ART TRENDS

ART TRENDS



1000002  
22X22cm



1000014  
16X22cm



1000021  
33X22cm



ART TRENDS



1000010  
45X22cm



1000006  
31X22cm

ART TRENDS



1000009  
33X22cm





**1000017**  
20X22cm



**1000018**  
28X22cm



**1000001**  
50X80cm



# ANIMAL SERIES



The Animal Series captures the elegance of wild creatures and the endearing charm of domestic pets, using masterful techniques to reveal the unique beauty of the animal kingdom and forge a deeper connection with the viewer.



## LV DANDAN



Not only pursuing the mastery of techniques and the perfection of the image, but also paying more attention to the expression of mental state, the cultivation of the inner self, and the expression of emotions, striving to imbue every brushstroke with vitality and infectiousness, allowing the audience to feel the depth of the artist's emotions and thoughts.

In the course of painting, traditional techniques and cultural heritage are the foundation and source of creation, while innovation is the driving force behind the continuous advancement of art.

The artist is always committed to seeking innovation and breakthrough on the basis of respecting tradition, striving to make their works possess both a deep cultural heritage and a contemporary spirit.

### Series of Art Piece

Wait	Pentium
Sheep	Leopard
The Big Goose in My Hometown	Tiger
Chicken	Fox
Dog	





A cat waiting for its owner to come home.



**1020003**

Wait  
50×60cm



Farmer's honest and docile sheep.



**1020006**

Sheep  
40×50cm





When I returned to my hometown,  
I saw two big white geese raised by my fellow villagers.



**1020008**  
The Big Goose in  
My Hometown  
70×50cm



A big chicken raised by my mother.  
**1020007**  
Chicken  
40×40cm



The neighbor's loyal and lovable basset hound.



**1020004**  
Dog  
40×50cm





The galloping horses show the freedom and enthusiasm of life.



**1020009**  
Pentium  
140×150cm



A leopard looking back while resting.

**1020001**  
Leopard  
40×50cm



Siberian tiger resting in the snow in winter.

**1020002**  
Tiger  
60×50cm







Red fox foraging at night.



**1020005**  
Fox  
40×50cm



## YU DE

Using vertical and horizontal lines as the medium, this abstract expression reflects a particular view of space and time.

The unrestrained interweaving of the lines becomes a symbolic language, representing social norms and conventions.

At the same time, it also signifies the individual's struggle, which appears meaningless or even futile in the face of these societal constraints.

### Series of Art Piece

One Should Give Rise to  
the Mind without  
Dwelling on Anything

Hunter by the Lake





Only by letting go of obsessions can you achieve nirvana and rebirth.



**1032003**  
One Should Give  
Rise to the Mind  
without Dwelling  
on Anything  
60cmx90cm

**1032002**  
Hunter  
by the Lake  
60cmx90cm



The ultimate meaning of the picture is not entirely about the unique attributes of animals when hunting, but is specifically used to express the anthropomorphic hierarchical differences!







## TAN YUZHUO



There is scenery everywhere in life,  
and everywhere is source material  
for creation.

Drawing from life,  
creating spontaneously.

### Series of Art Piece

The Cat Next Door  
Part 3 -  
Awakening



I once learned from books that cats are the patron saints of ancient Egypt.  
In Taoism and Buddhism in China,  
cats are often used as mythical animals to represent good luck and peace.



**1040005**

The Cat Next Door Part 3 - Awakening  
80x100cm



ART TRENDS

Explore new trends to find your style  
and discover the art of you.



1000032  
20X22cm



1000034  
18X22cm



1000035  
20X22cm

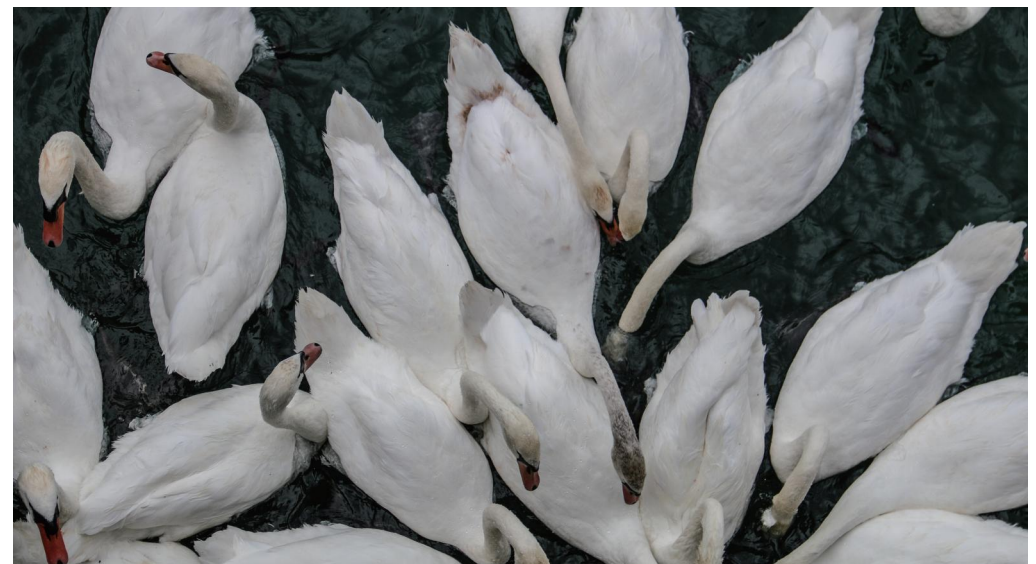




**1000033**  
19X22cm



**1000036**  
38X22cm



**1000037**  
33X22cm





 ART TRENDS

**1000038**  
19X22cm



**1000039**  
22X22cm



 ART TRENDS

**1000040**  
17X22cm





ARTIST  
AUTHORIZATION

## SU YANWEN



Flowers are often imbued with specific symbolic meanings in painting, becoming a medium for expressing emotions.

For example,  
the rose symbolizes love,  
the lotus represents purity,  
and the chrysanthemum implies longevity.

Choosing specific flowers as the theme,  
infusing one's own emotions, desires,  
or reflections into the work,  
and contemplating their growth, blossoming,  
and withering.

### Series of Art Piece

Peony and Fengxiang  
Clay Dragon

Peony 13

Flower Sketch 11

# FLORAL SERIES

The Floral Series celebrates the vibrant and delicate splendor of nature's finest creations, with lush colors and delicate petals that evoke a sense of wonder and appreciation for the natural world.





The peony symbolizes wealth and auspiciousness, and the Fengxiang clay dragon represents strength and wisdom, combining to show the love of traditional culture and national spirit.



**1025003**

Peony and Fengxiang Clay Dragon  
70x50cm



The oil painting still life of peony has an exquisite composition, with the peony in the center as the focus, and the branches and leaves extending to add harmony. The work adds traditional cultural elements to express the yearning and pursuit of a better life.



**1025002**

Peony 13  
60x70cm





Hydrangea and Echeveria are the themes of oil painting still life,  
showing rich colors,  
delicate textures and a tranquil atmosphere.  
Hydrangea has a gradient color, dense flower clusters and a unique charm.



**1025001**

Flower Sketch 11  
100x100cm



# WANG KAISHENG



In the vast realm of art,  
the core concept of 'perpetual renewal'  
has always been the guiding principle for artistic exploration,  
upholding the profound foundation  
of Chinese heavy-color painting.

**Series of Art Piece**



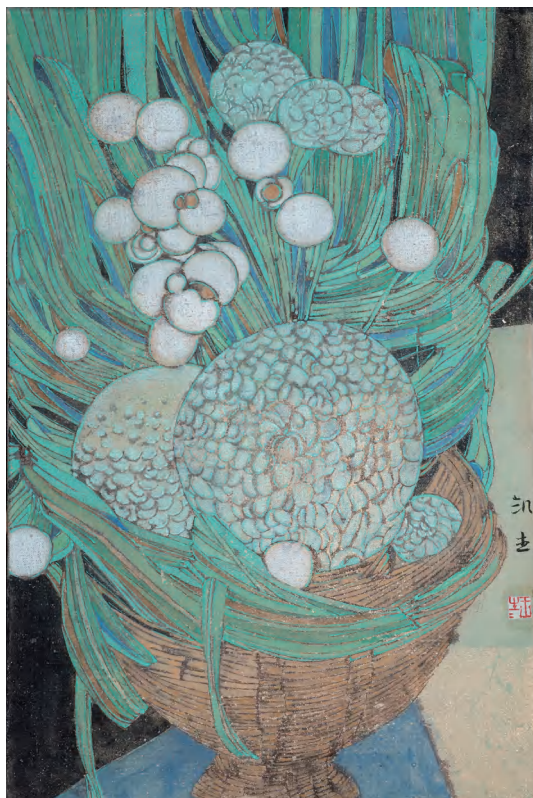
Lives Series

The Frog's Search  
for Flowers Series





ARTIST  
AUTHORIZATION



**1027006**

Lives 1  
60x40cm

**1027007**

Lives 2  
60x40cm



### SERIES OF ART PIECE: LIVES SERIES

Using the pen name Wang Shengsheng, I drew pictures of unique animals and plants under the title "Endless Life", integrating my own thoughts into a series of works that express the feeling of nature.



ARTIST  
AUTHORIZATION

### SERIES OF ART PIECE: THE FROG'S SEARCH FOR FLOWERS SERIES

I paint frogs and aquatic plants because I have a deep yearning and love for nature. This is one of a series of works.



**1027001**

The Frog's Search  
for Flowers 2  
40x30cm





SERIES OF ART PIECE:  
THE FROG'S SEARCH FOR FLOWERS SERIES

I paint frogs and aquatic plants because I have a deep yearning and love for nature.  
This is one of a series of works.



**1027002**  
The Frog's Search for Flowers 3  
40x30cm



**1027003**  
The Frog's Search for Flowers 4  
40x30cm



**1027004**  
The Frog's Search for Flowers 5  
40x30cm



**1027005**  
The Frog's Search for Flowers 1  
40x30cm





# LI XUEYING



The simple shape exudes a breath of youthful vitality,  
and the beauty of life is felt.

## Series of Art Piece

Summer Overture  
Series

Disorder Series

Yanshan Garden  
Fallen Leaves  
Series



1042005

1042006

Yanshan Garden Fallen Leaves

100x160



## SERIES OF ART PIECE: YANSHAN GARDEN FALLEN LEAVES SERIES

Find a sense of balance from nature's wild and charming layers,  
and hone the shapes, lines, and colors.

Use planes and pattern elements to express the vitality  
and complexity of the wild growth of nature.





SERIES OF ART PIECE:  
SUMMER OVERTURE SERIES



**1042001**  
Summer Overture NO.1  
150x200cm



**1042002**



Find a sense of balance from nature's wild and charming layers,  
and hone the shapes, lines, and colors.

Use planes and pattern elements to express the vitality and complexity of the wild growth of nature.



**1042003**  
Summer Overture NO.2  
120x200cm



**1042004**





SERIES OF ART PIECE:  
DISORDER SERIES



**1042009**  
Disorder NO.2  
100x120cm



Find a sense of balance from nature's wild and charming layers,  
and hone the shapes, lines, and colors.

Use planes and pattern elements to express the vitality  
and complexity of the wild growth of nature.



**1042007**  
Disorder NO.1  
120x200cm

**1042008**





# ZANG LUJUN



Nature is the central theme of my artistic creations, as I strive to be deeply connected to and appreciative of the natural world.

My aim is to capture the fleeting yet profound moments of inspiration and the emotionally resonant instances that arise in our everyday lives.

From the changing seasons: spring, summer, autumn, and winter, each possesses its own distinct beauty as time flows onward.

Every component of the natural landscape, whether a single blade of grass, a towering tree, majestic mountains, or flowing waters, emanates its own inherent vitality.

Nature provides us with boundless sources of inspiration and imagination.

My works are akin to poetic tributes to the natural realm – effortless, joyful, and soothing to the human spirit.

Series of Art Piece

Grass Series



**SERIES OF ART PIECE: GRASS SERIES**

Close to nature, everything has spirits and emotions.

The grass and trees are lush and full of vitality, very lovely and moving.

**1051002**  
Grass 1  
100x80cm

**1051003**  
Grass 2  
80x60cm







## HE LINXIANG



Focusing on the balance between realism and abstraction, he is deeply influenced by expressionism and pays attention to the emotional expression of color and the free flow of brushstrokes.

### Series of Art Piece

Flowers are not flowers

Plants have their own nature



A tranquil scene of blooming flowers amidst grass and trees.

The vibrant painting skillfully blends the essence of spring with the tenacity of life.

**1053002**

Flowers are not flowers  
80x60cm

It's based on outdoor flowers and trees. Using freehand geometric brushstrokes to capture the shadows of flowers and trees in spring.

In the picture, clusters of flowers and green leaves are intertwined, showing the vitality and harmonious beauty of nature.

The work is rich in color, with clear layers, full of the breath of spring.

**1053001**

Plants have their own nature  
60x80cm





# ART TRENDS

Explore new trends to find your style  
and discover the art of you.



**1000054**  
17X22cm

# ART TRENDS



**1000055**  
29X22cm

**1000056**  
29X22cm







**1000047**  
15X22cm



**1000049**  
15X22cm



**1000053**  
22X22cm



**1000052**  
22X22cm





**1000048**  
19X22cm



**1000050**  
19X22cm



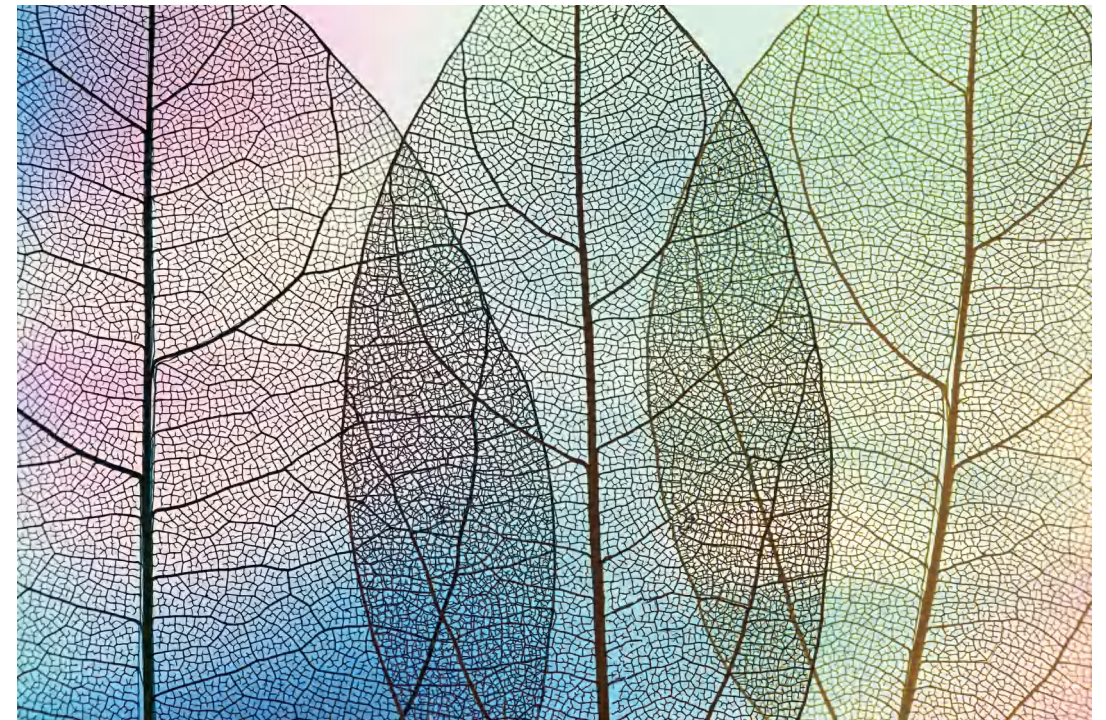
**1000057**  
22X22cm



 ART TRENDS



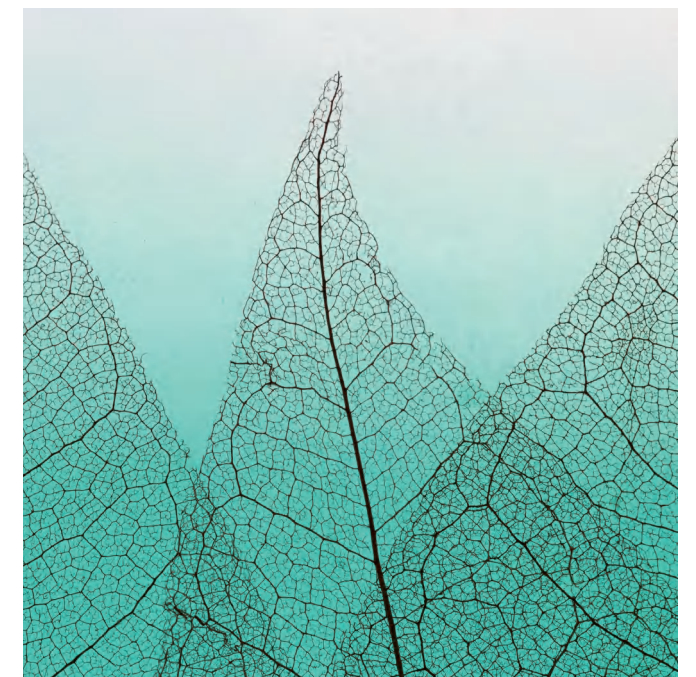
**1000058**  
18X22cm



**1000059**  
33X22cm

**1000060**  
22X22cm

 ART TRENDS







**1000041**  
16X22cm



**1000042**  
16X22cm



**1000046**  
22X22cm



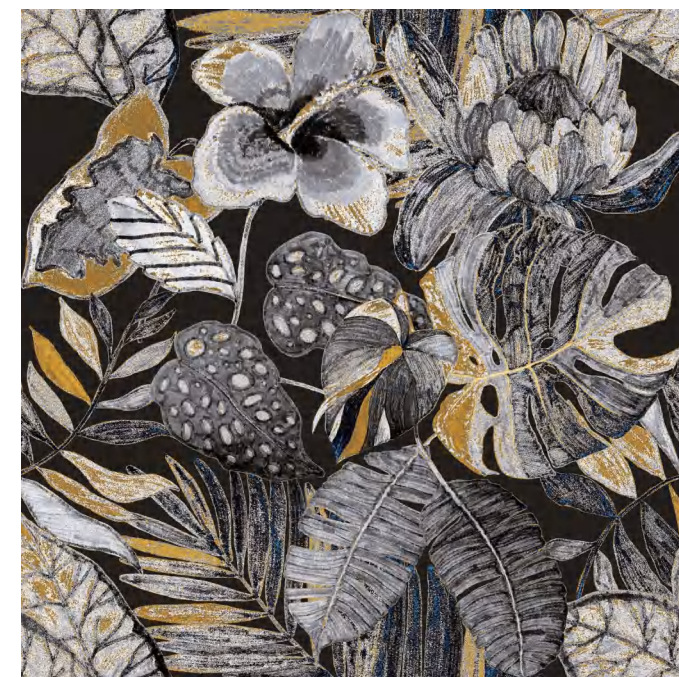


**1000043**  
12X22cm



**1000044**  
39X22cm

**1000045**  
22X22cm





# PORTRAIT SERIES

The Portrait Series delves into the inner worlds of the human experience, using refined artistry to bring the subjects to life and foster an empathetic connection between the viewer and the human condition.



ARTIST  
AUTHORIZATION

## CHEN CHONGHUI



Transcending traditional realism, choosing a surreal interest.

In the midst of the vibrant and flamboyant oil painting colors and the magical, novel modern art, it still maintains a sense of clarity and tranquility.

### Series of Art Piece

Strange Girl  
Series





ARTIST  
AUTHORIZATION

SERIES OF ART PIECE:  
STRANGE GIRL SERIES

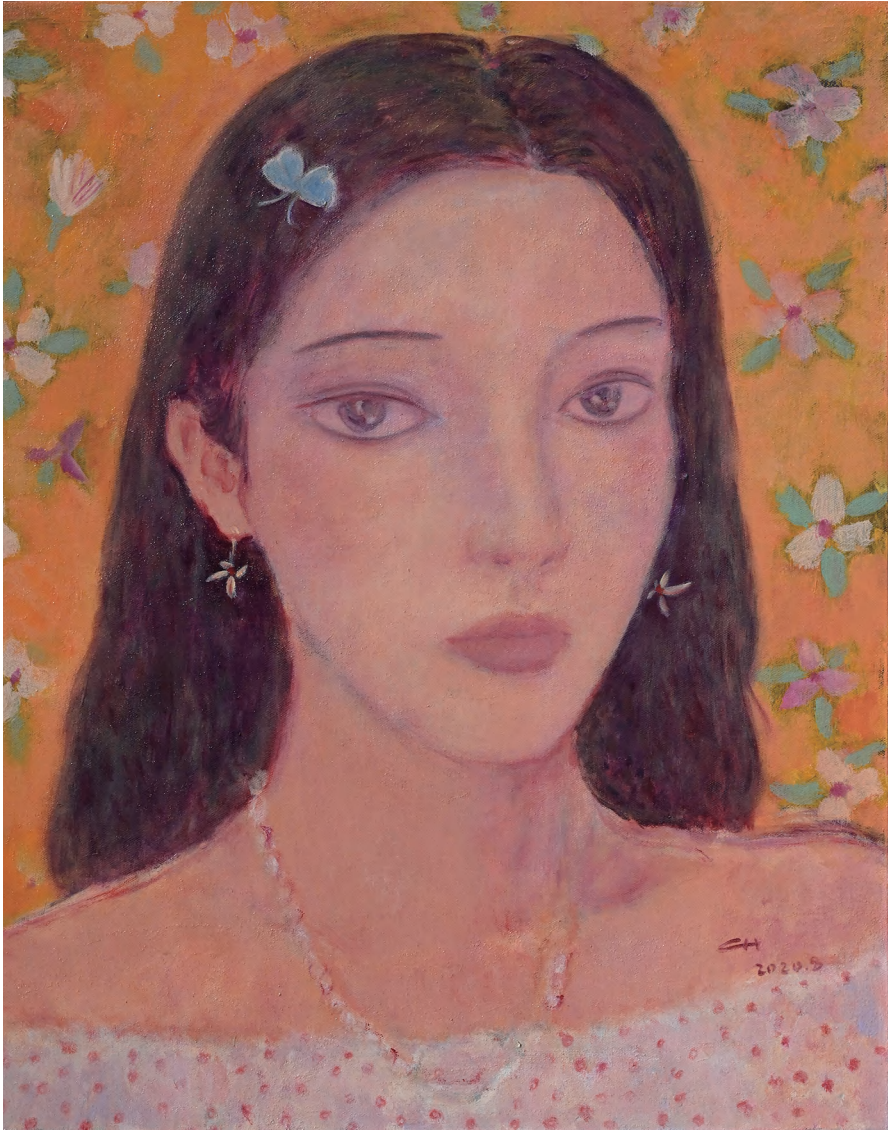


**1004004**  
Strange Girl NO.49  
100X100cm

**1004005**  
Strange Girl NO.51  
180X160cm

ARTIST  
AUTHORIZATION

Portraiture has always been a subject that interests me.  
On each person's face, one can see her joy and sorrow,  
as well as the atmosphere bestowed by the times.



**1004002**  
Strange Girl  
NO.47  
100X100cm





SERIES OF ART PIECE:  
STRANGE GIRL SERIES



**1004001**  
Strange Girl NO.46  
100X100cm



Portraiture has always been a subject that interests me.

On each person's face, one can see her joy and sorrow,  
as well as the atmosphere bestowed by the times.



**1004003**  
Strange Girl NO.48  
100X100cm





## LI YIFAN

By appropriately weakening the volume of the human figure's facial features and limbs, and emphasizing the role of the outline and the presentation of decorative symbolic elements, the realistic and decorative languages are fully integrated within the same space.

The painting is permeated with a strong personal aura and a mysterious atmosphere, aiming to express awe for life and sorrow for the constant passage of time.

### Series of Art Piece

Lipstick

Years



The woman in the picture looks at a loss, with her extremely fair face set off by her red lips.

The patterns on her clothes are rich and varied, revealing the complex inner world of the character, which is both a self-examination and a reflection on the outside world.



**1014001**

Lipstick  
100x160cm





ARTIST  
AUTHORIZATION

Using women of different ages as the subject of creation,  
showing the unique image charm of women at different ages.

It's imbued with a strong personal quality and an air of mystery,  
aiming to express awe of life and sorrow over the passage of time.



**1014002**

Years

140x160cm



ARTIST  
AUTHORIZATION

## LIU GUANCHONG



Xinjiang is a place where diverse cultures gather,  
with traditional folk customs flowing through it,  
and many modern and  
diverse cultures integrated into it.

The work is an exploration of the portrayal  
of young people in Xinjiang in the new era,  
mostly thinking about the living conditions  
of the characters around them,  
and giving them unique regional characteristics.

### Series of Art Piece

Light of Pamir

Pamirs Plateau Boarding  
Primary School

Support Construction  
ShenTa Middle School  
Series

Plateau students:  
First lesson of teaching





The pictures of students and animals living in harmony are treated in a flat manner, striving to be concise and vivid.



**1017001**

Plateau  
students:  
First lesson  
of teaching  
160X120cm

Tharacter modeling is concise and concise,  
intended to express the herdsmen's son's yearning for a better life.



**1017003**

Light of  
Pamir 2  
198X100cm



The subject is a boarding primary school in the Pamir Plateau.

The painting tends to be flat,  
and the colors are subjective and exaggerated,  
intending to show the simple image of the son of a herdsman.



**1017002**

Pamirs Plateau Boarding Primary School  
160X120cm





SERIES OF ART PIECE:  
SUPPORT CONSTRUCTION SHENTA MIDDLE SCHOOLSERIES

Selecting the simple and vivid images of the herdsmen’s children,  
with exaggerated structure and strong colors.



**1017004**  
Support construction  
shenta Middle School 3  
198X100cm



**1008005**  
Support construction  
shenta Middle School 2  
160X120cm

ART TRENDS

Explore new trends to find your style  
and discover the art of you.



**1000063**  
16X22cm





**1000061**  
16X22cm



**1000062**  
16X22cm





**1000064**  
19X22cm